

Plan problems

Mathematics

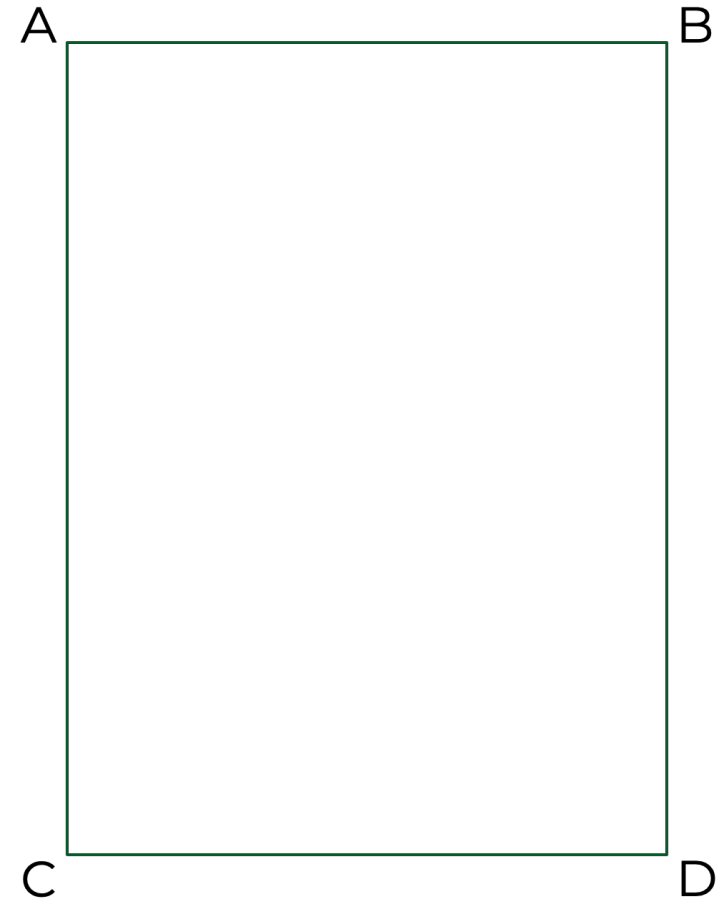
Mr Maseko



Try this

Draw a rectangle and label the corners A, B, C, D clockwise, as in the diagram to the right.

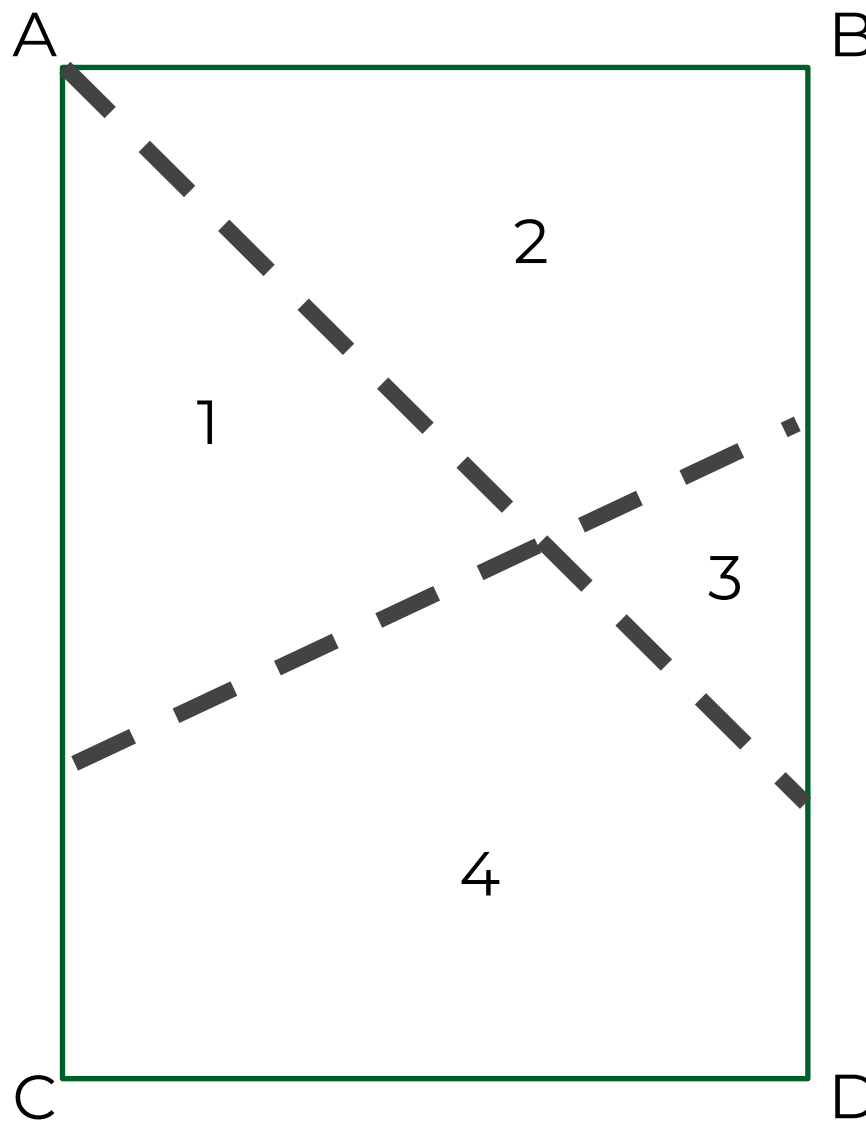
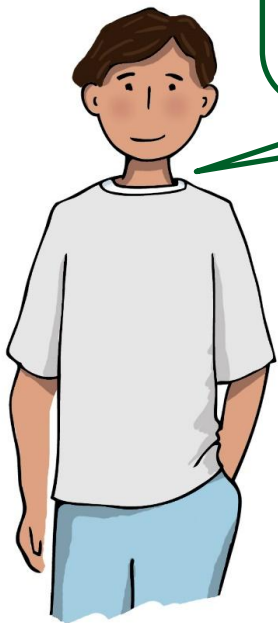
- 1) Bisect the angle BAC.
- 2) Find the perpendicular bisector of AD.



Connect

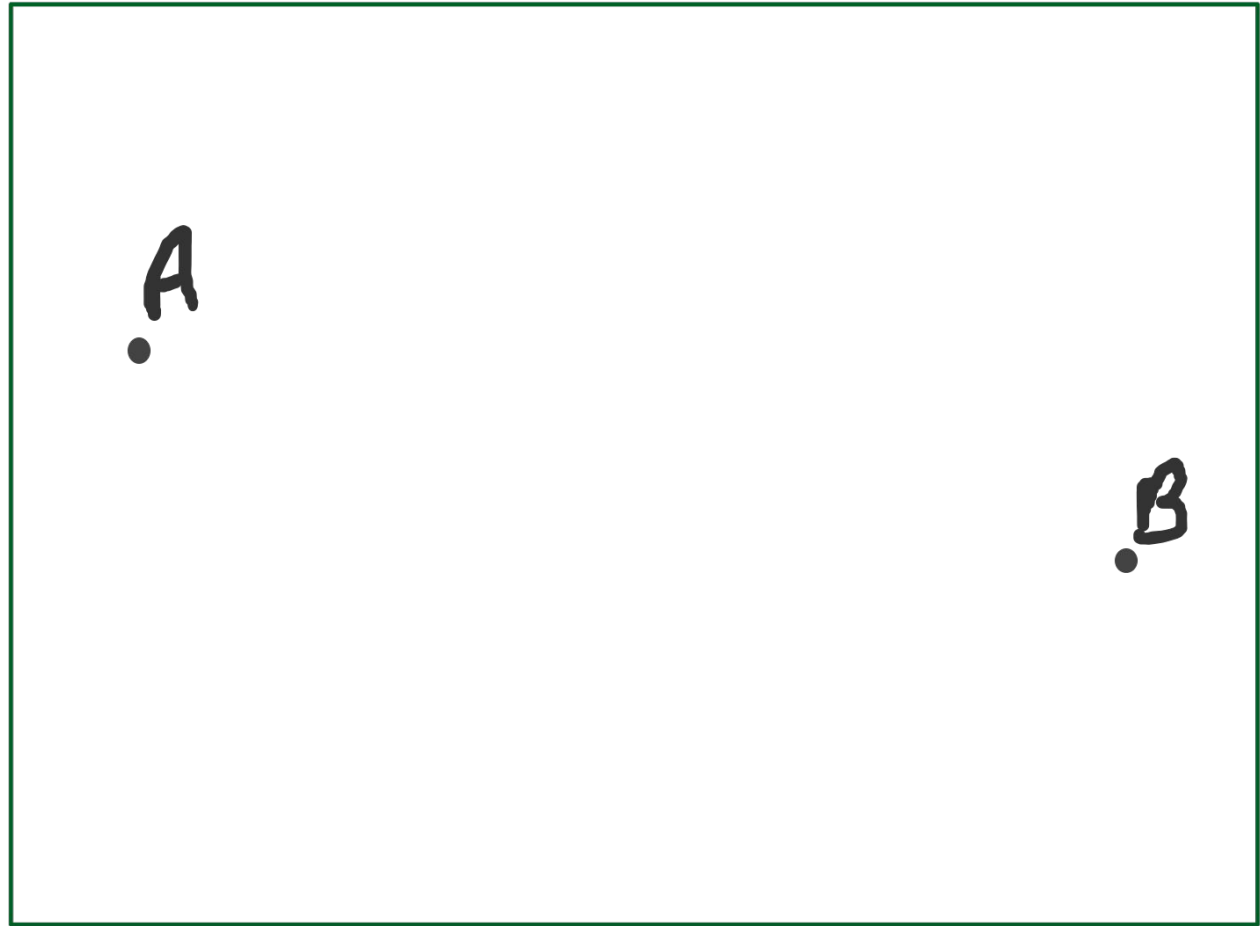
You should now have 4 regions on your page.
What statements can you make about those regions?

Any point in region 1 is closer to A than D, and it is closer to AC than AB



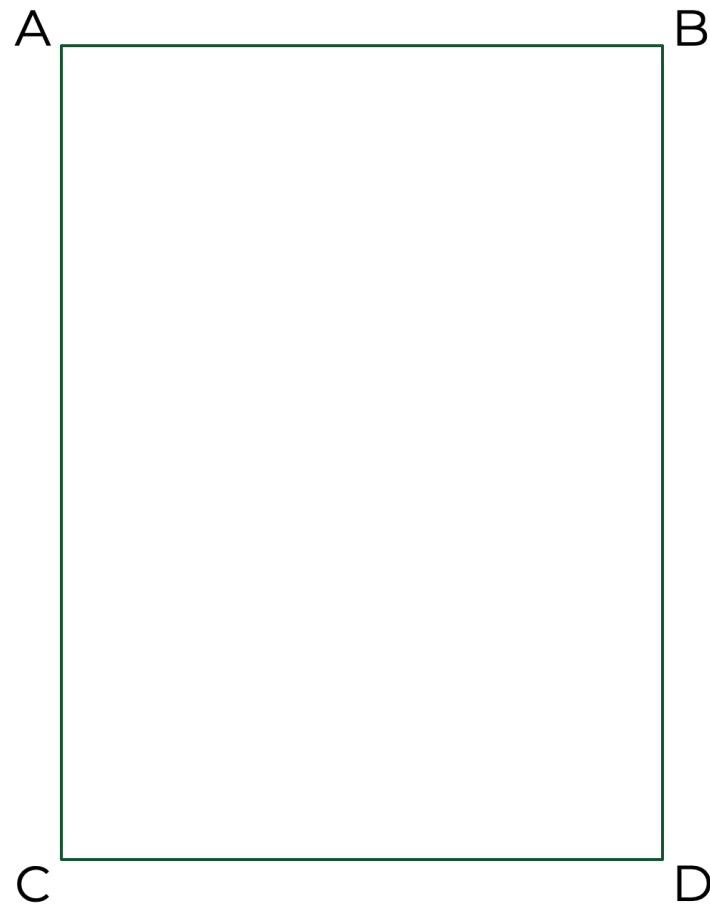
Connect

Draw two points on a piece of paper and shade in the region that is closer to A than B.



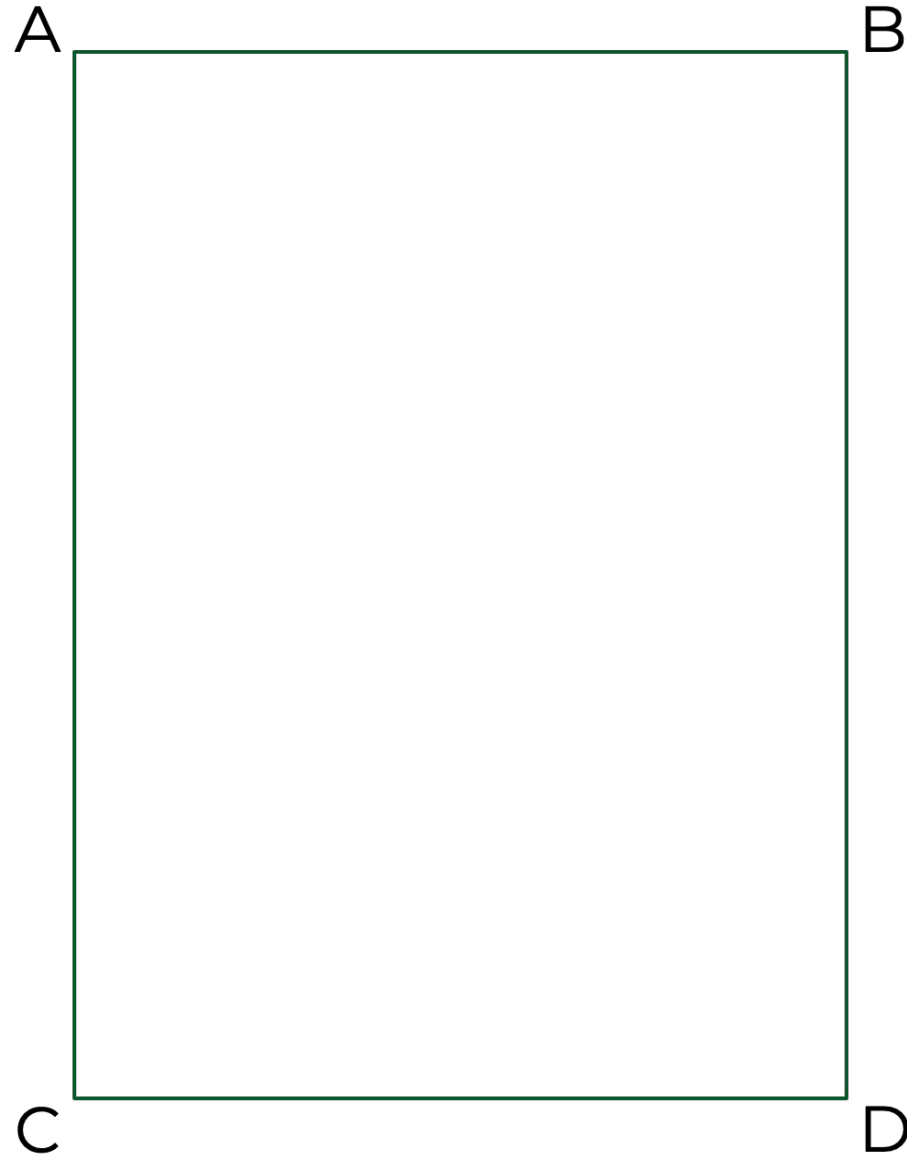
Connect

Shade in the region that is closer to AB than AC.



Independent task

Shade in the region that is both closer to D than C and closer to CD than BD.



Explore

Yasmin is planning her garden:

- 1) Everything that is closer to CD than AC will be a flower bed
- 2) Everything within 3 metres of A will be gravel
- 3) The rest will be grass

What shape will the gravel, and flower bed be? What areas can you find?

