

Mathematics

Truncating Axes

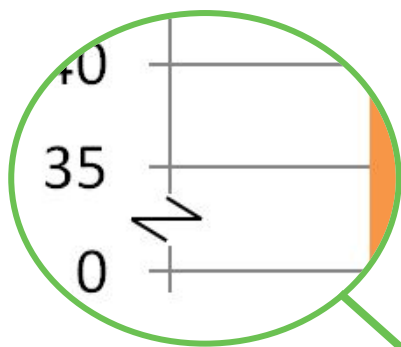
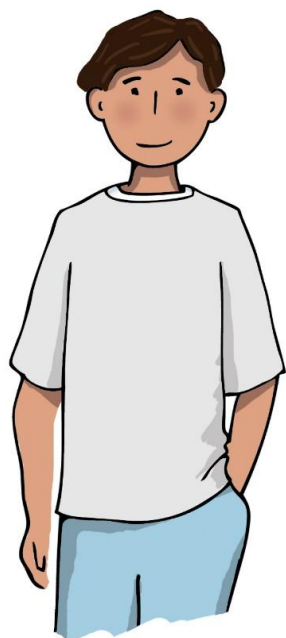
Mr Millar



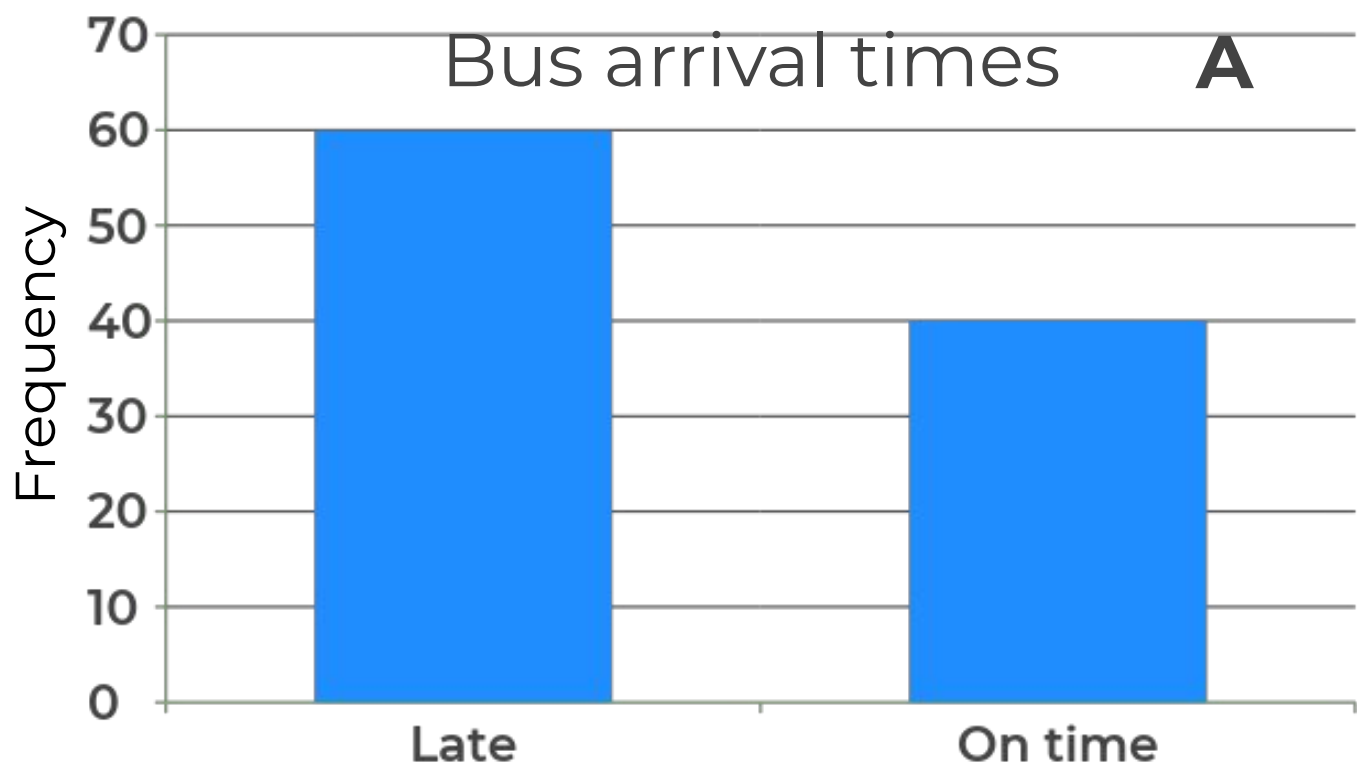
Try this

Do you agreed with Antoni?
Why? Why not?

Chart B shows fewer
buses were late as the
bar is smaller.



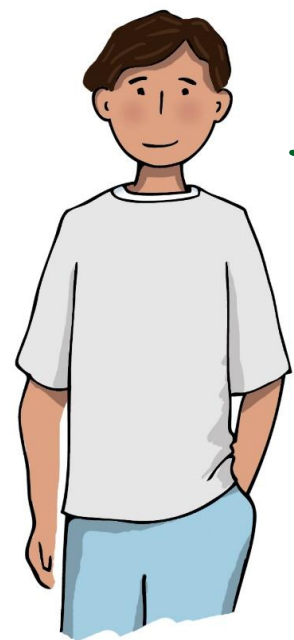
What does this mean?



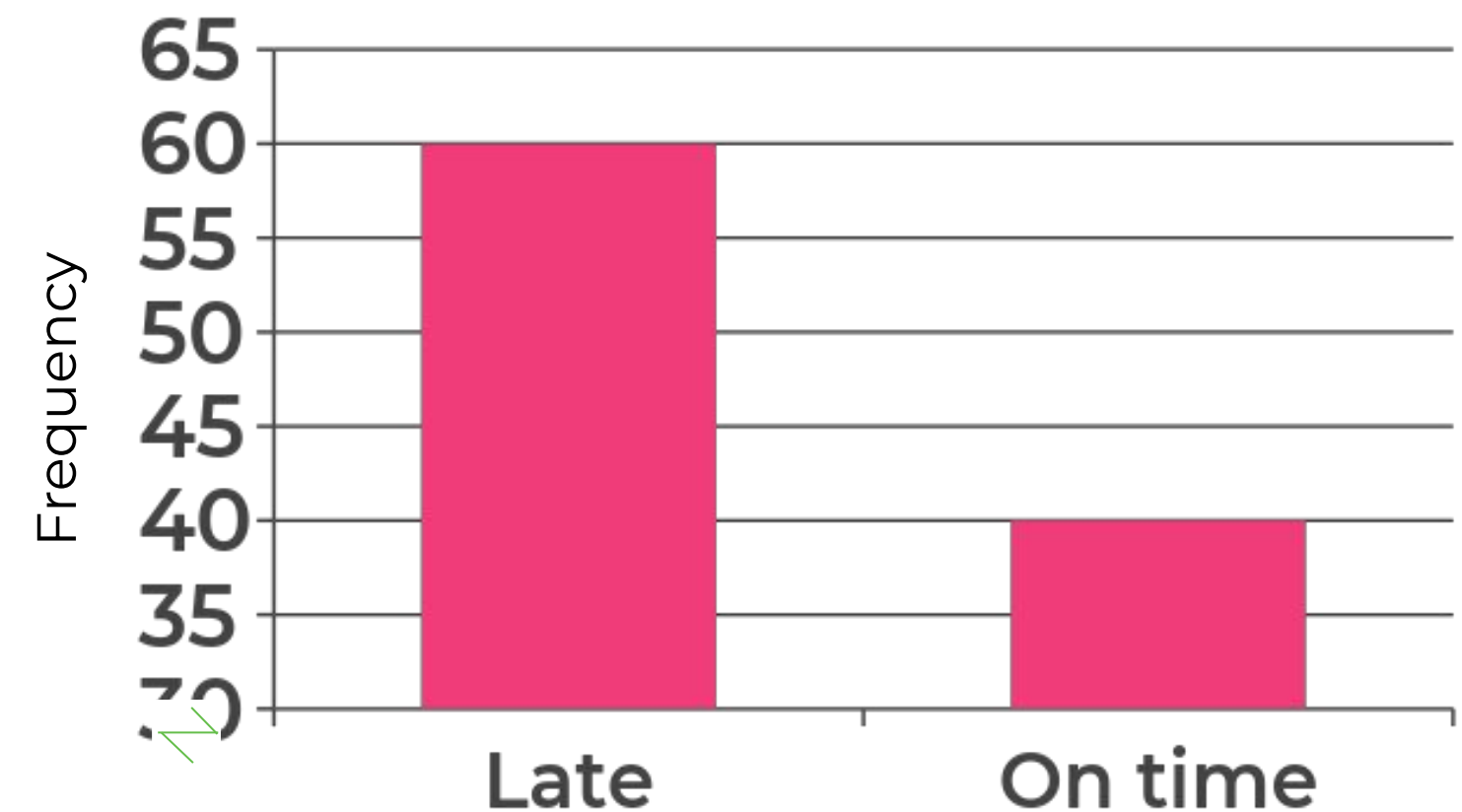
Connect

Truncating axes can help us see data differences and detail in the data points more clearly but we need to be careful when reading data in this way.

Explain why Antoni is incorrect.



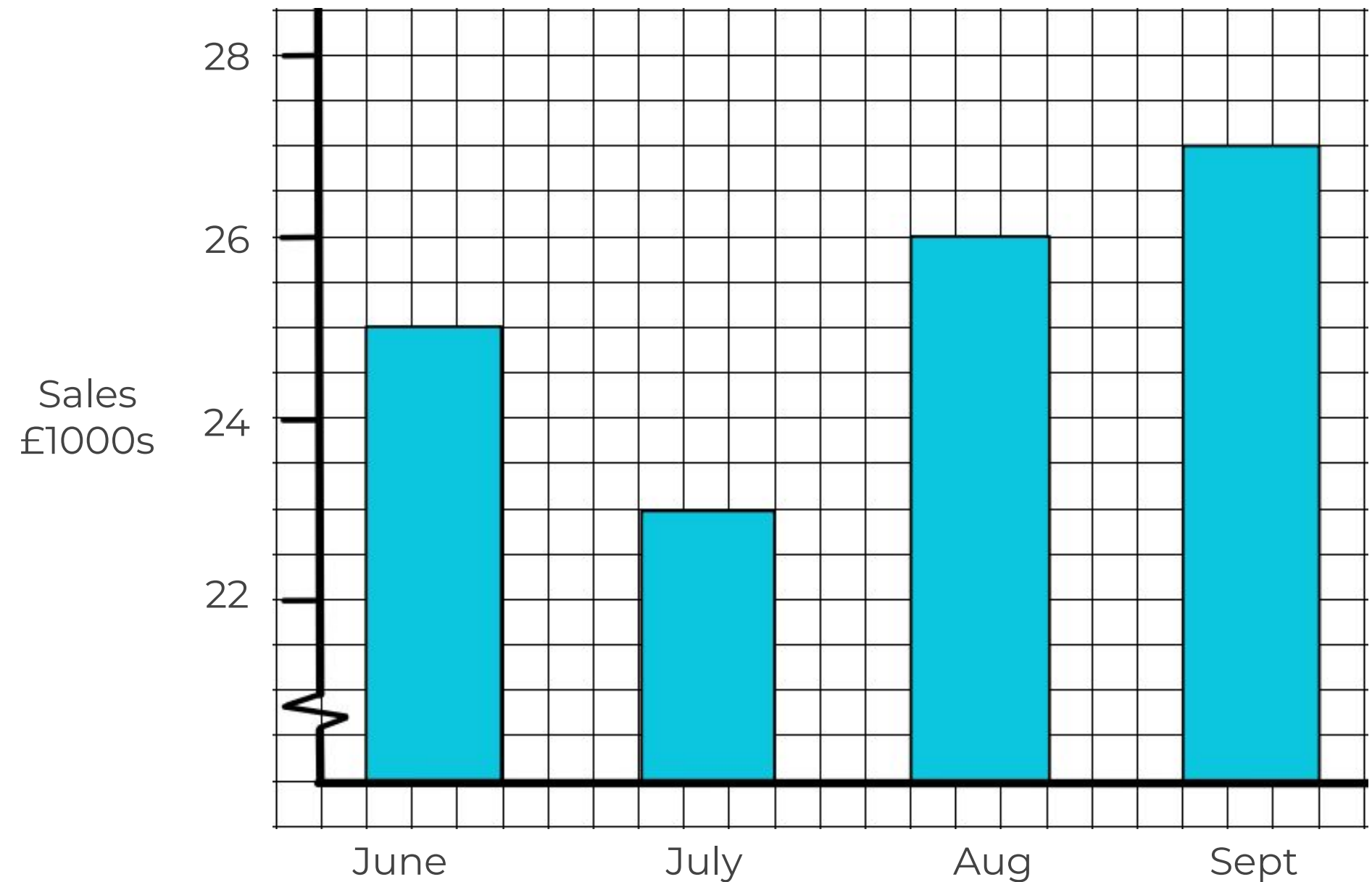
This chart shows triple the number of busses were late than were on time.



Independent task

State whether the following are true or false:

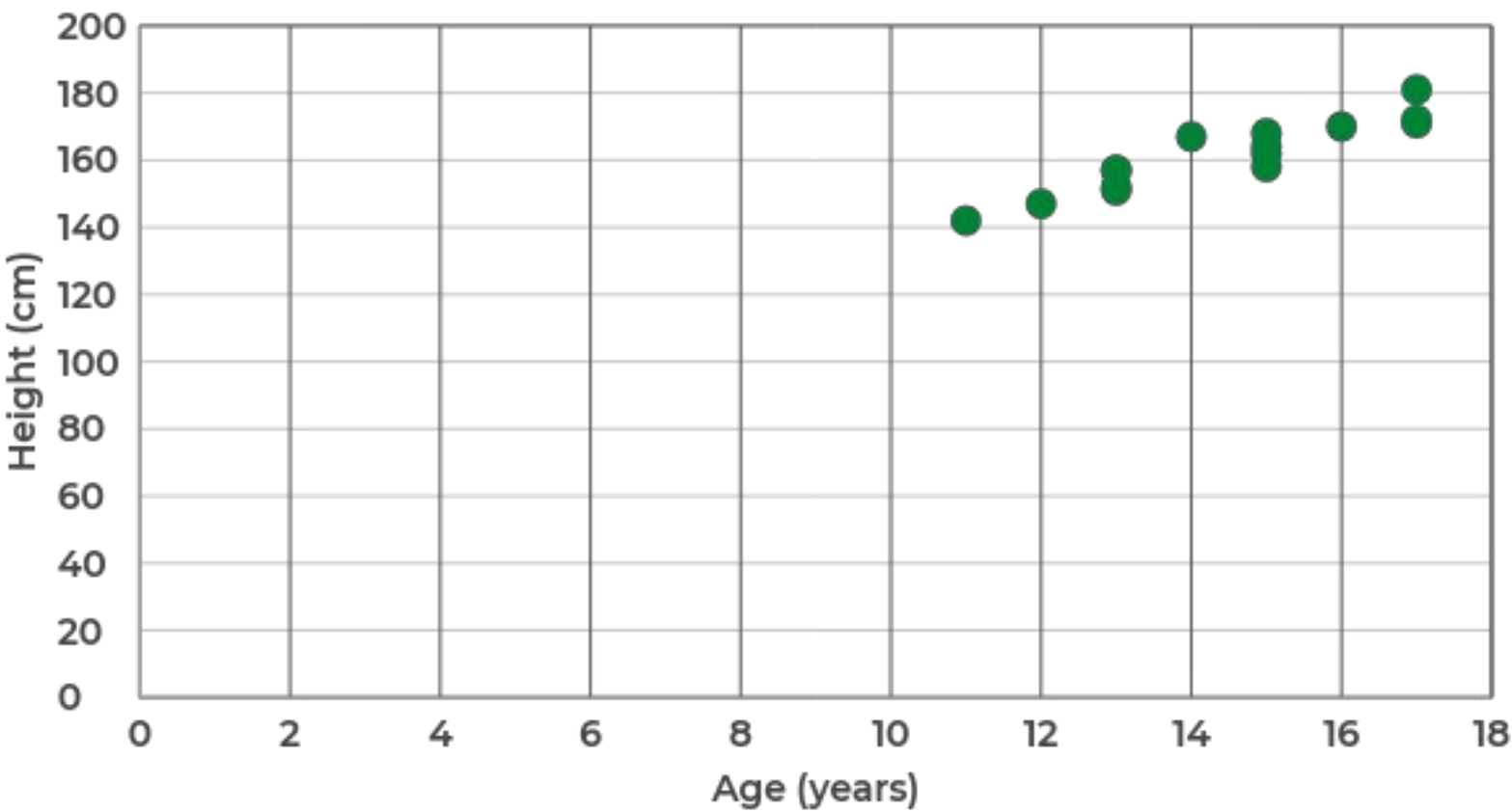
- September had more than double July's sales
- September was the best month of the year
- 8% more was sold in September than June



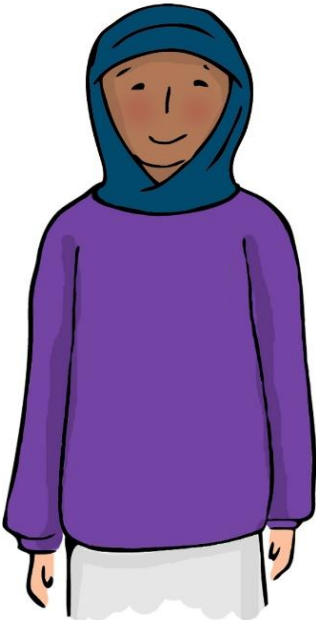
Explore

How could Cala improve this scatter graph?

Draw a version that you think shows the information better.



Height (cm)	147	142	152	157	162	164	167	168	170	151	157	158	171	172	181
Age (years)	12	11	13	13	15	15	14	15	16	13	13	15	17	17	17



Answers

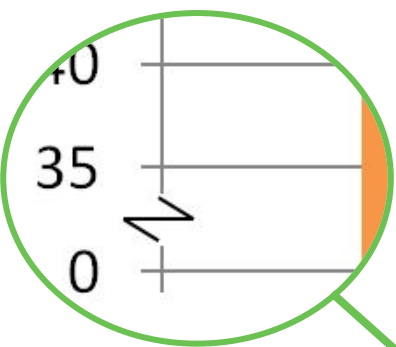
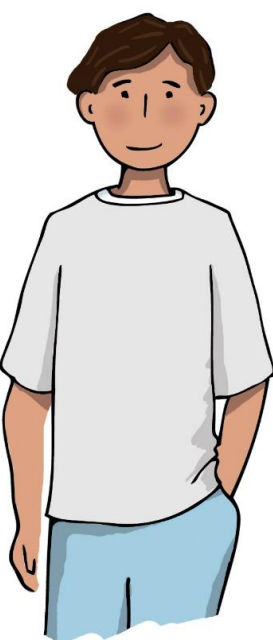


Try this

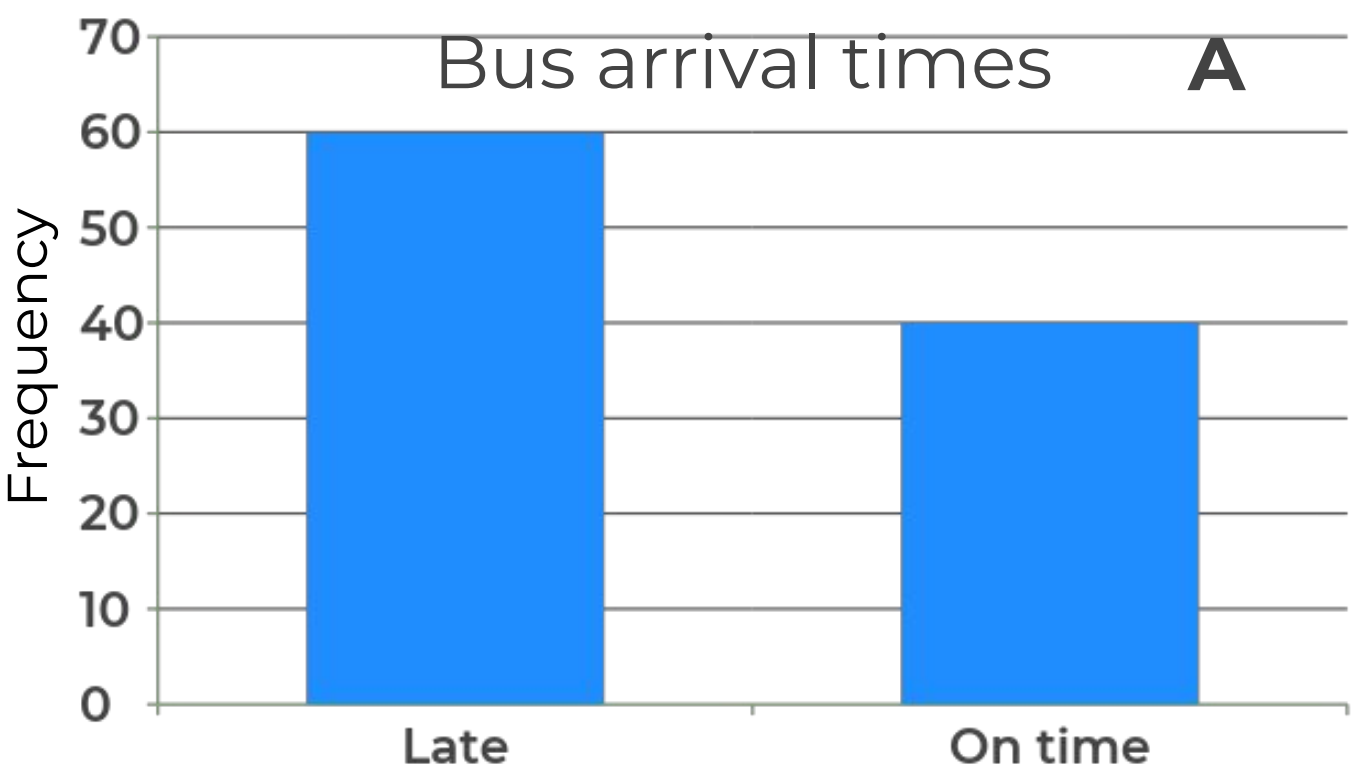
Do you agreed with Antoni?
Why? Why not?

Chart B shows fewer buses were late as the bar is smaller.

Disagree: both charts are showing the same data; the scale on the second y axis has been **truncated**



What does this mean?

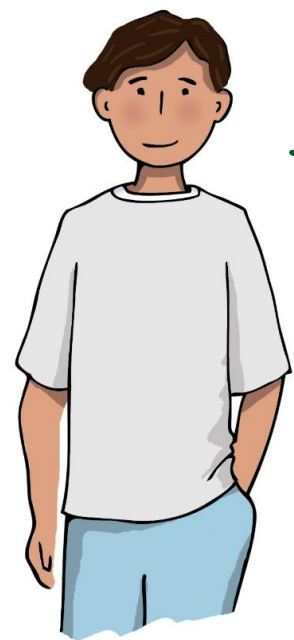


Connect

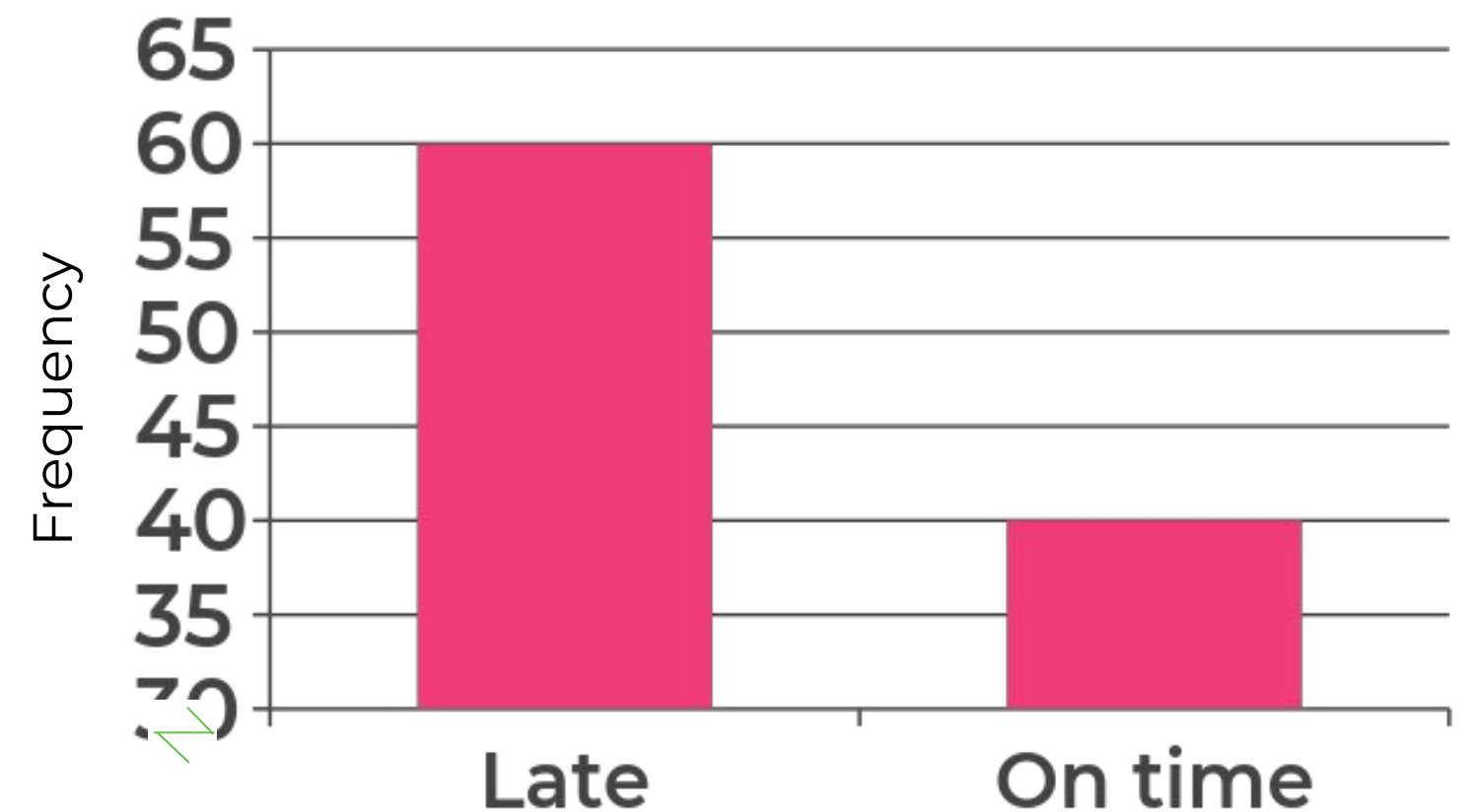
Truncating axes can help us see data differences and detail in the data points more clearly but we need to be careful when reading data in this way.

The axis shows
60 were late vs
40 on time

Explain why Antoni is incorrect.



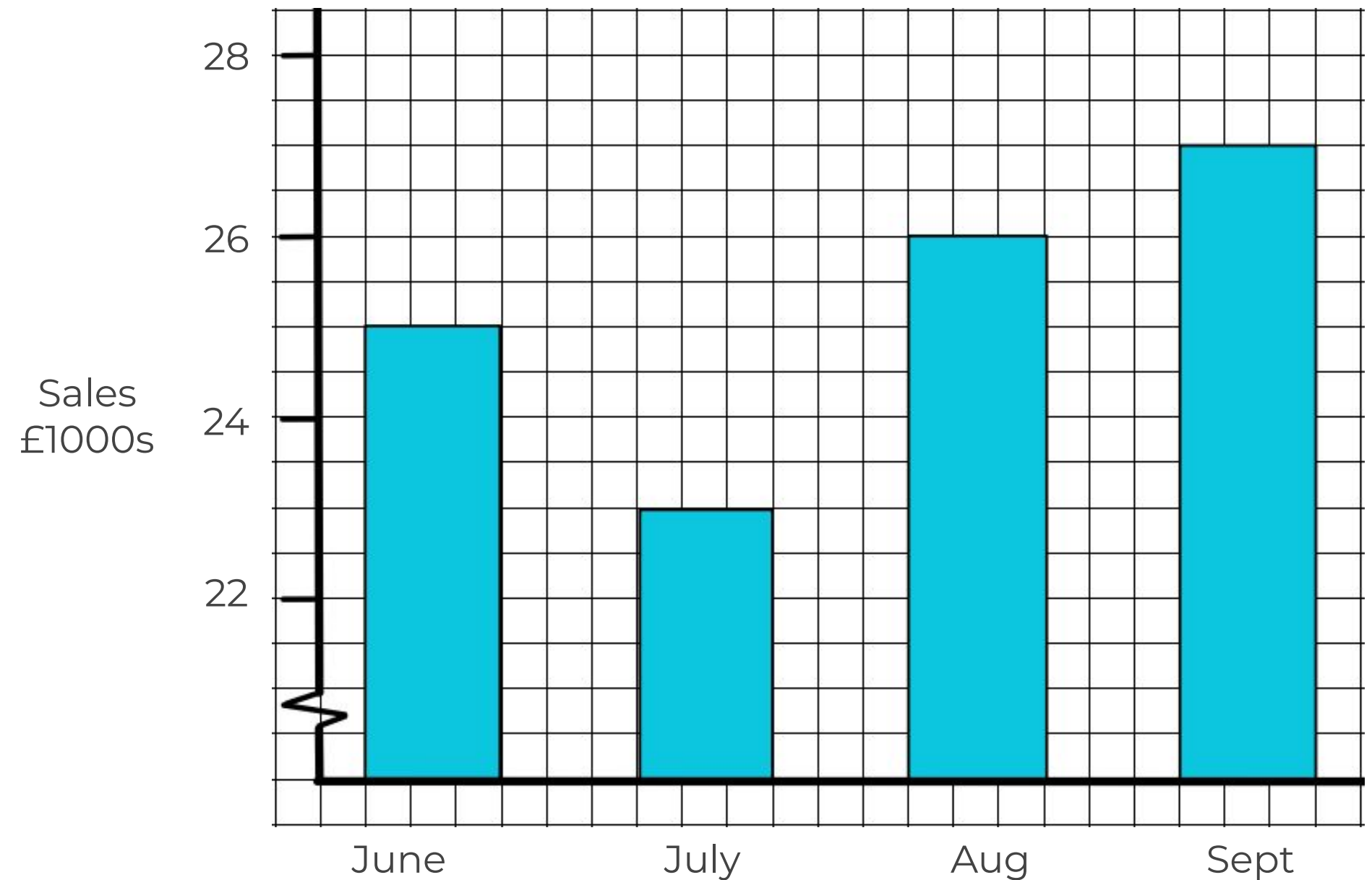
This chart shows triple the number of busses were late than were on time.



Connect

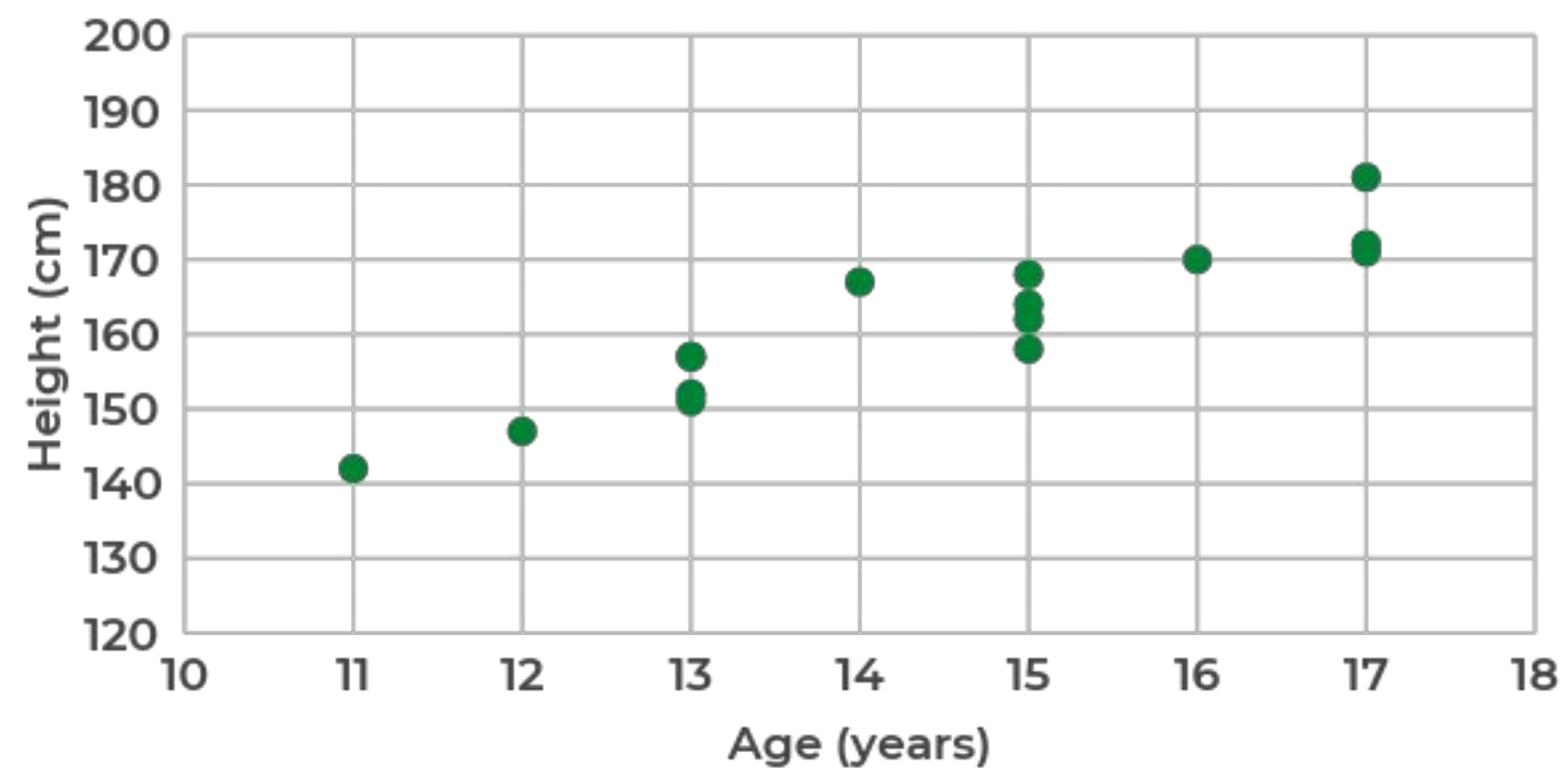
State whether the following are true or false:

- September had more than double July's sales **False**
- September was the best month of the year **True**
- 8% more was sold in September than June **True**



Connect

The truncated axes makes reading the data easier.



Height (cm)	147	142	152	157	162	164	167	168	170	151	157	158	171	172	181
Age (years)	12	11	13	13	15	15	14	15	16	13	13	15	17	17	17

