

Maths

Sketch 3D Shapes When Given a Plan View and Elevation

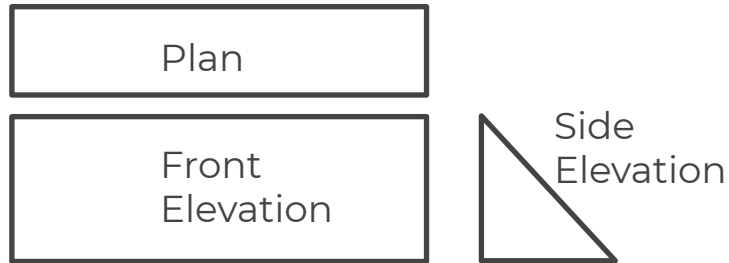
Mr Bond



Sketch 3D shapes when given a plan view and elevation

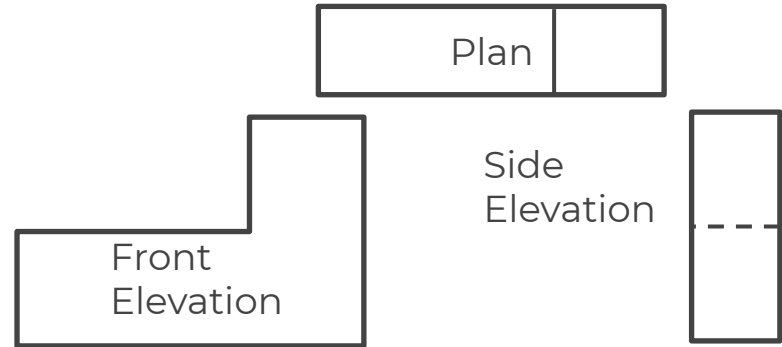
1. Below is the plan view, front elevation and side elevation of a prism.

Sketch the prism.



2. Below is the plan view, front elevation and side elevation of a 3D shape.

Sketch the prism.



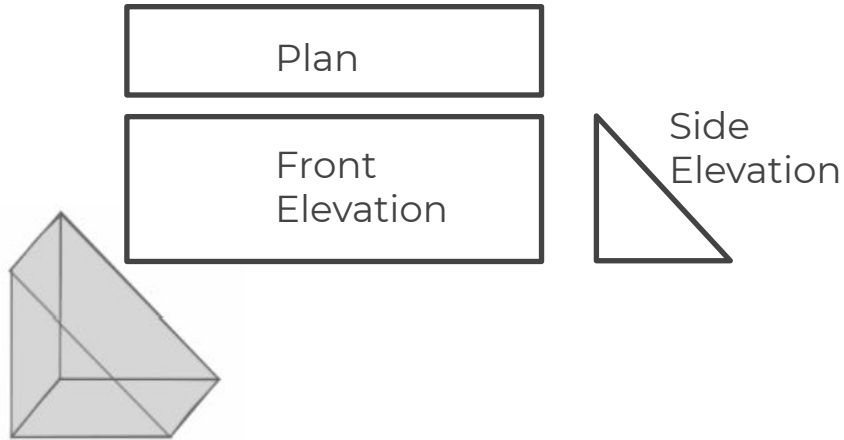
Answers



Sketch 3D shapes when given a plan view and elevation

1. Below is the plan view, front elevation and side elevation of a prism.

Sketch the prism.



2. Below is the plan view, front elevation and side elevation of a 3D shape.

Sketch the prism.

