

Mathematics

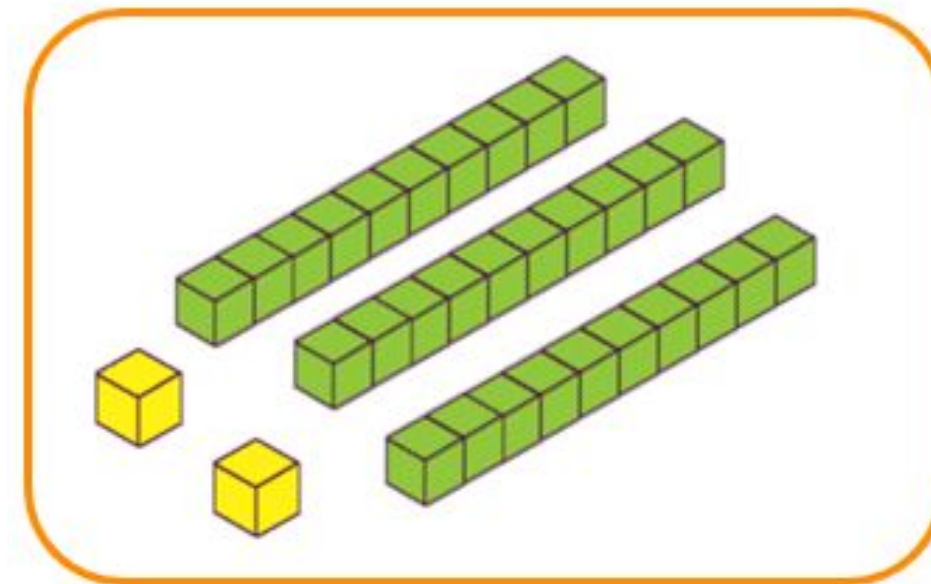
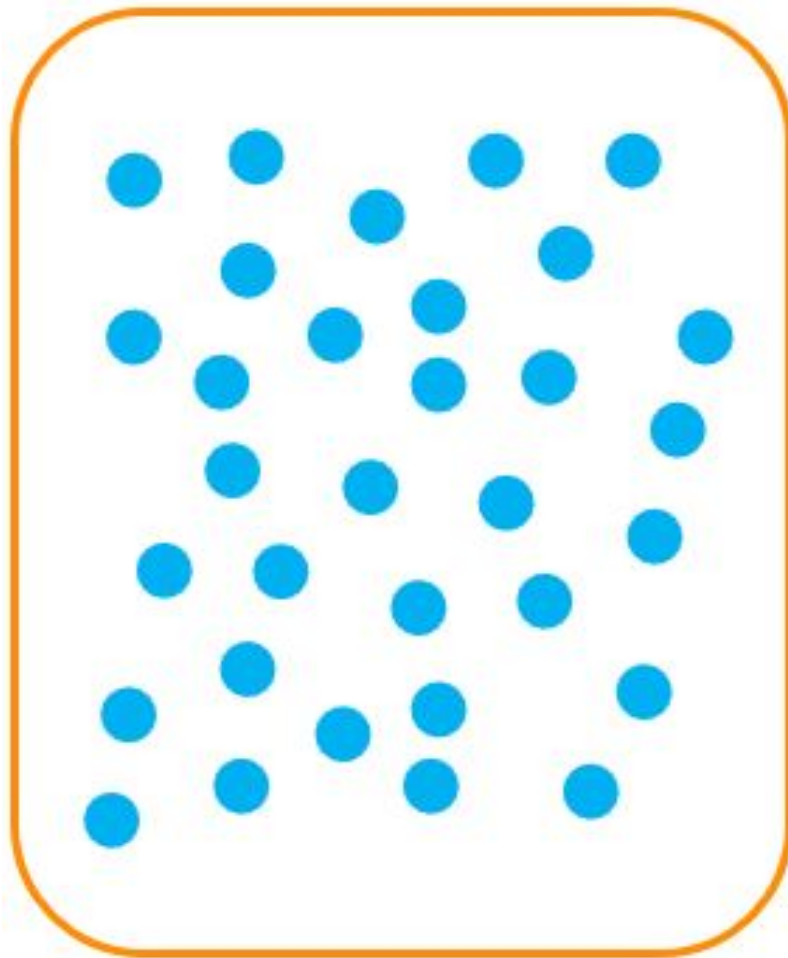
Representing Number

Mr Millar



Try this

Which of these representations would be the most helpful to explain this number to an alien? Why?

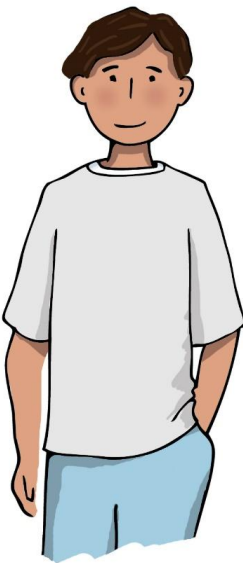
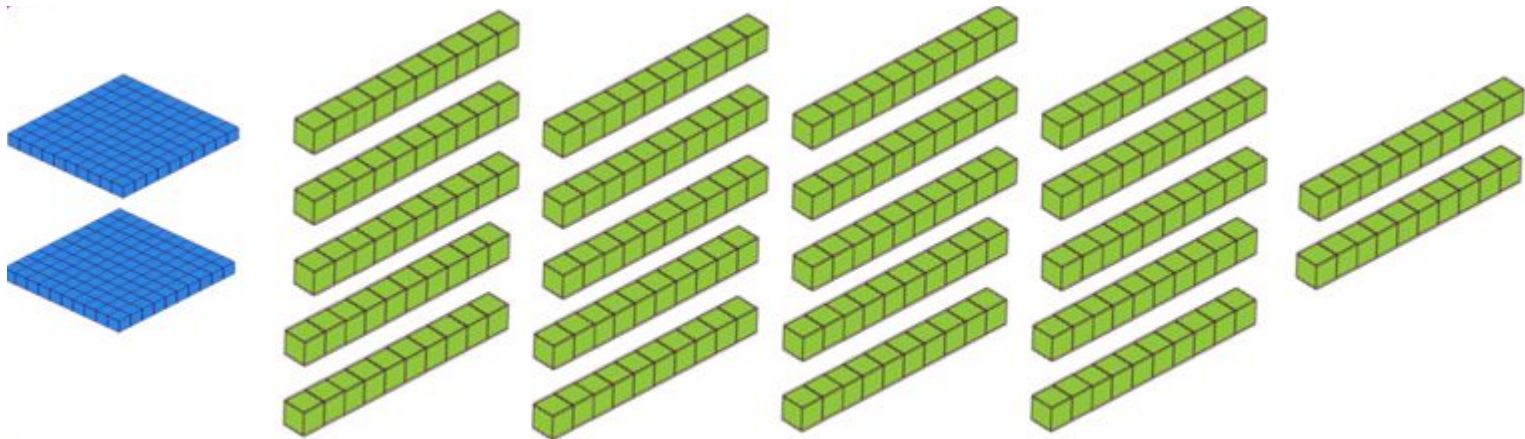


Tens	Ones
3	2



Connect

Antoni, Binh and Cala are discussing the number “two hundreds and twenty two tens”



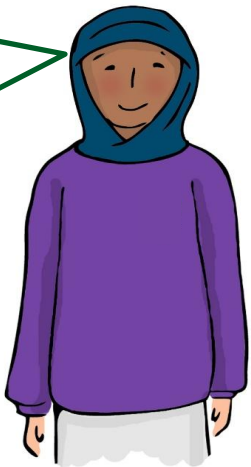
I can think of it as “two lots of a hundred and”



I can group some of the tens together to make a hundred

Thousands	Hundreds	Tens	Ones

I can write each part in the place value system



Independent task

Thousands	Hundreds	Tens	Ones

1. State if the following are true or false

4 thousand = 40 hundreds

8 thousand = 800 ones

4 thousand + 2 hundreds =
420 tens

3 hundreds + 15 ones =
315 tens

2. Put these in ascending order

204
tens

2004
ones

2 thousands +
40 ones

24
hundreds



Explore

Form each number by placing the cards into the place value grid.

Thousands	Hundreds	Tens	Ones
<input type="text"/>	<input type="text"/>	<input type="text"/>	<input type="text"/>

3184

4

3

8

1

3127

7

12

3

2904

4

10

8

2

4444

4

14

3

13

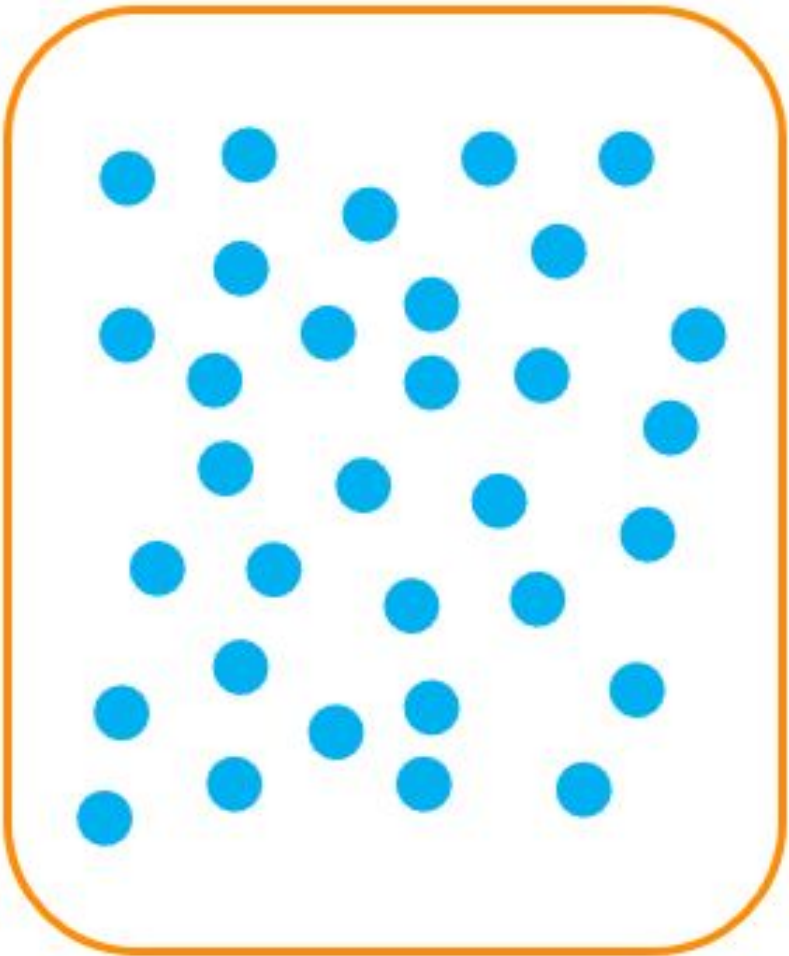


Answers

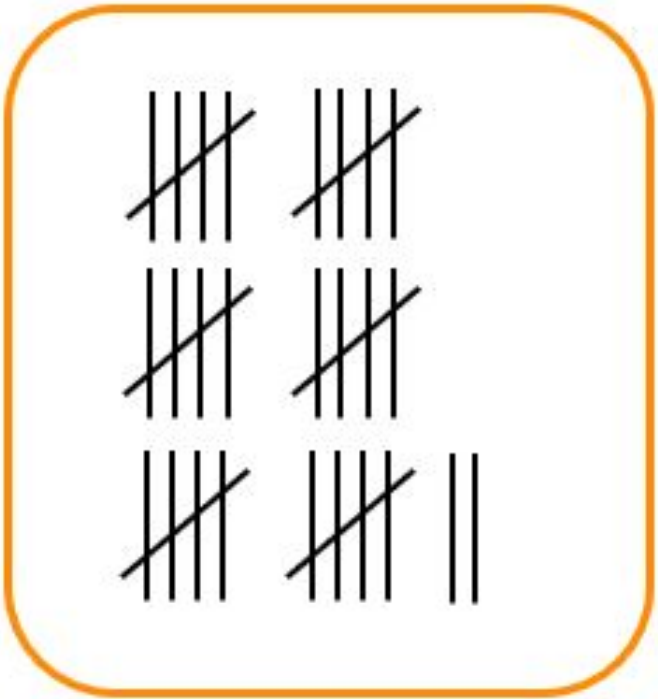


Try this

Which of these representations would be the most helpful to explain this number to an alien? Why?

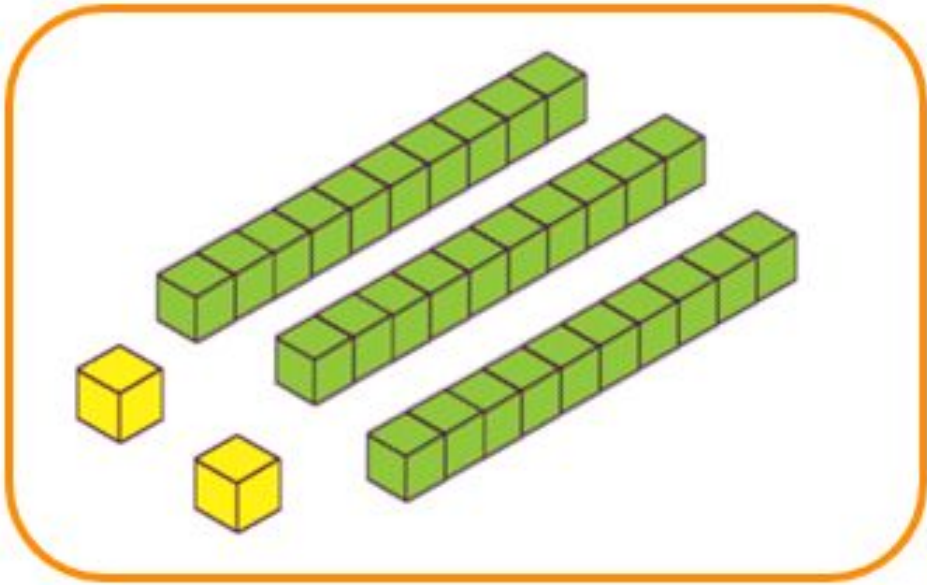


32 ones



6 lots of 5

2 ones



3 lots of 10

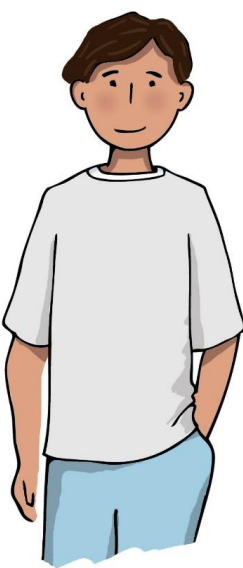
2 ones

Tens	Ones
3	2



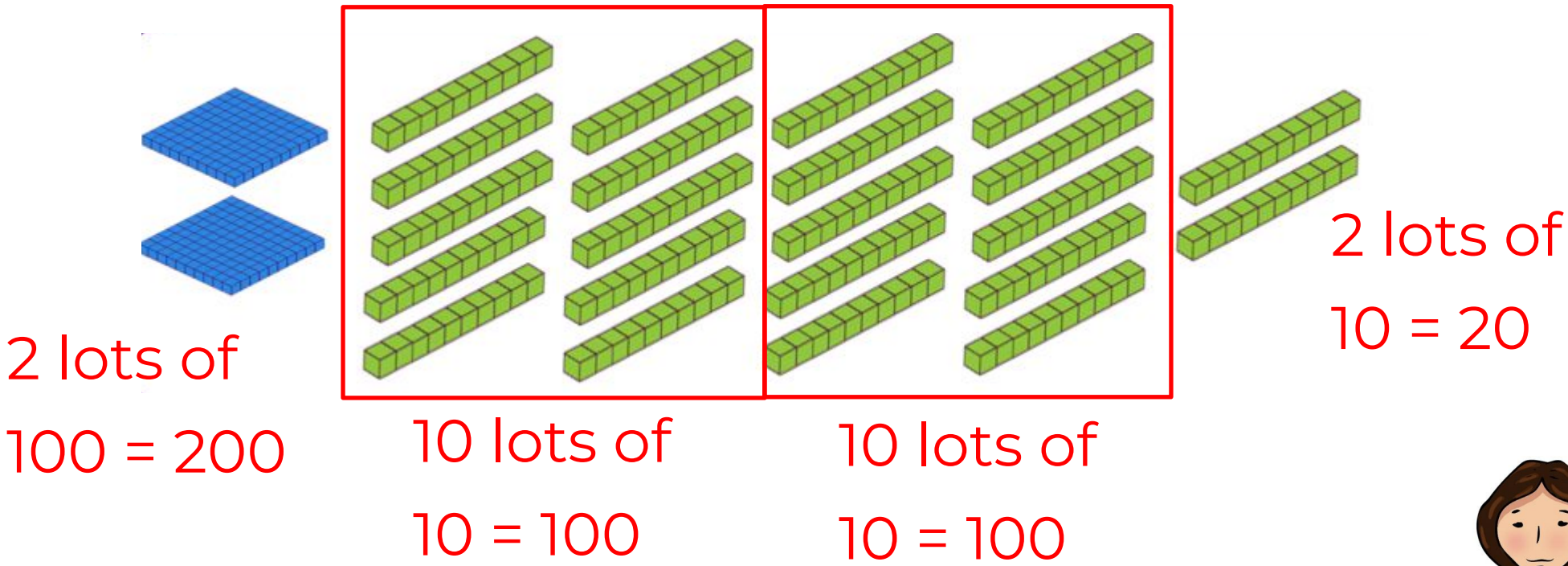
Connect

Antoni, Binh and Cala are discussing the number “two hundreds and twenty two tens”



I can think of it as “two lots of a hundred and ...”

$2 \times 100 = 200$
 $22 \times 10 = 220$
sum to 420

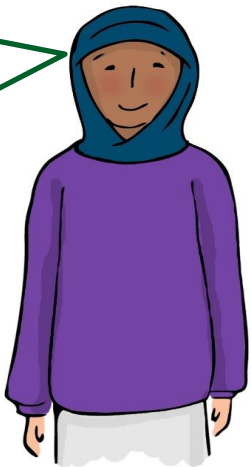


I can group some of the tens together to make a hundred



Thousands	Hundreds	Tens	Ones
	2		
	2	2	

I can write each part in the place value system



Independent task

Thousands	Hundreds	Tens	Ones

1. State if the following are true or false

True

4 thousand = 40 hundreds

True

4 thousand + 2 hundreds =
420 tens

False

8 thousand = 800 ones

False

3 hundreds + 15 ones =
315 tens

2. Put these in ascending order

204
tens

2040

2004
ones

2004

2 thousands +
40 ones

2040

24
hundreds

2400



Explore

Form each number by placing the cards into the place value grid.

Thousands	Hundreds	Tens	Ones
<div></div>	<div></div>	<div></div>	<div></div>

3184

4

3

8

1

3127

7

12

3

2904

4

10

8

2

4444

4

14

3

13

Thous ands	Hund reds	Tens	Ones
<div>3</div>	<div>1</div>	<div>8</div>	<div>4</div>

Thous ands	Hund reds	Tens	Ones
<div>3</div>	<div></div>	<div>12</div>	<div>7</div>

Thous ands	Hund reds	Tens	Ones
<div>2</div>	<div>8</div>	<div>10</div>	<div>4</div>

Thous ands	Hund reds	Tens	Ones
<div>4</div>	<div>3</div>	<div>13</div>	<div>14</div>

or

3

13

14

4

