

Music

Unit 3 Lesson 10

How can we create a stylistic blues accompaniment?

Ms Friar



Piano Chords

12 bar blues

G	G	G	G
C	C	G	G
D	C	G	G/D

G	C	D
G	C	D



Bass

12 bar blues with walking bass line

G	G	G	G
C	C	G	G
D	C	G	G/D

Musical notation for a 12-bar blues in G major, 4/4 time. The first staff shows chords: G major (bars 1-4), C major (bars 5-6), G major (bars 7-8), and G major with a sharp (bars 9-12). The second staff shows a walking bass line: G (bar 1), A (bar 2), B (bar 3), C (bar 4), D (bar 5), E (bar 6), F# (bar 7), G (bar 8), A (bar 9), B (bar 10), C (bar 11), and D (bar 12).

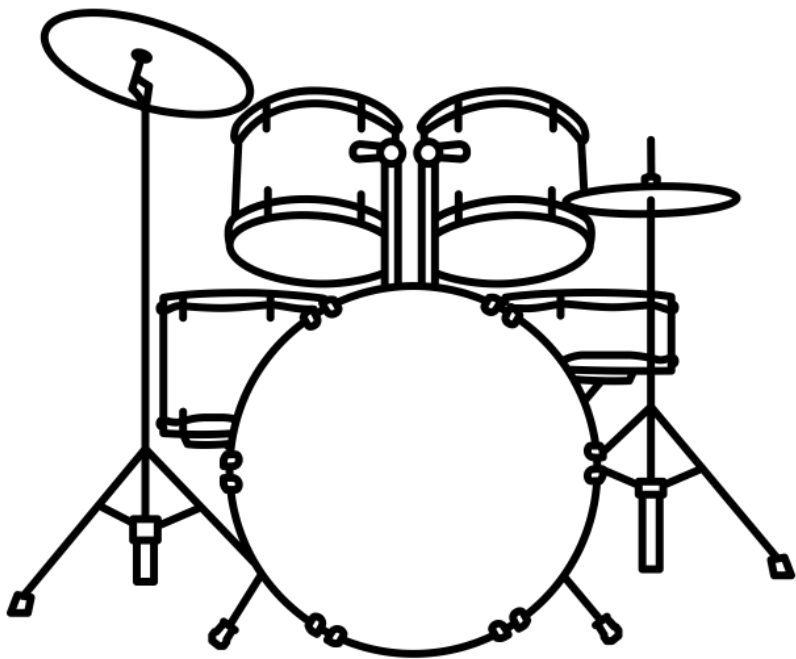
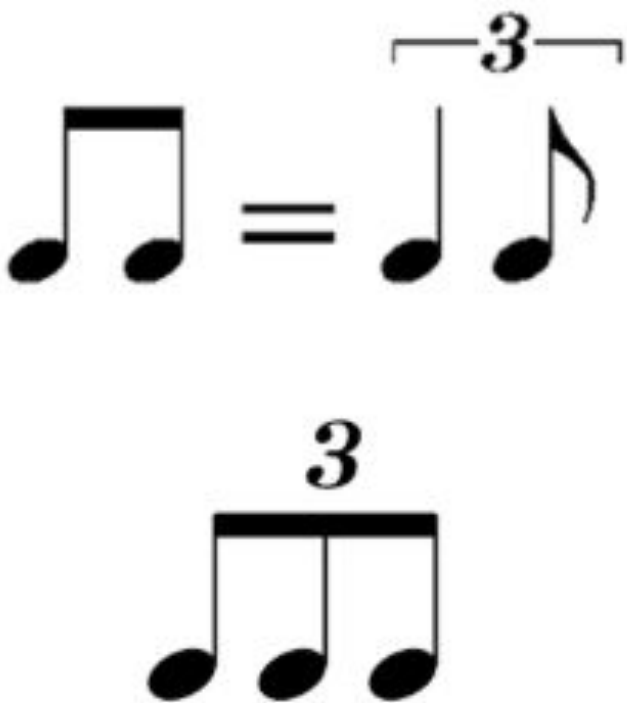


Drums - Blues Shuffle Rhythms

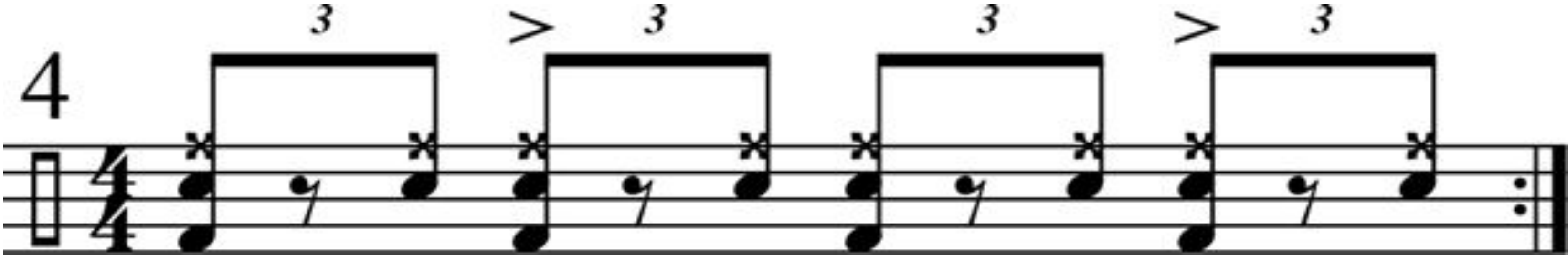


Created by Luisa Iborra
from Noun Project

Created by Marmelade
from Noun Project

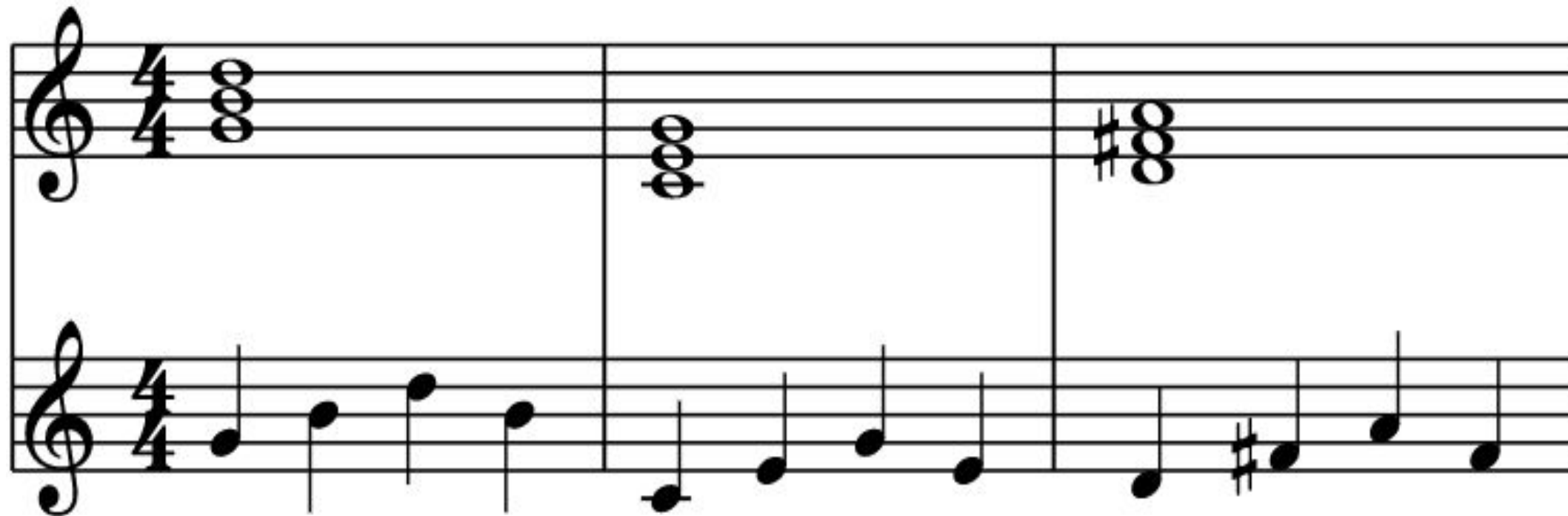


Created by Tom Fricker
from Noun Project



Blues Style Bass

12 bar blues with walking bass line



Created by Luis Prado
from Noun Project

1. Play the broken chord notes but with swung and interesting rhythms.
2. Play an ascending and descending pattern with added blue notes.



Blues STYLE Piano Chords

12 bar blues

G	G	G	G
C	C	G	G
D	C	G	G/D

G7	G7	G7	G7
C7	C7	G7	G7
D7	C7	G7	G7/D 7



Blues Style Piano Chords - Vamping

Play a repeating chord progression in a more stylistic way - following a solo player who will be improvising.

G	G	G	G
C	C	G	G
D	C	G	G/D

1. Play the IV chord at the same time.
2. Add the octave into the rhythm of the chords.
3. Split/divide the chords.
4. Use the 7th note as a passing note into the next chord.



References

Slide [2] - [flickr] - [sashachua] - [ukulelechordsheet]

Slide [2] - [wikimediacommons] - [ashaio] - [cmajorchordforguitar]

Slide [2] - [wikimediacommons] - [ashaio] - [gmajorchordforguitar]

Slide [2] - [wikimediacommons] - [ashaio] - [dmajorchordforguitar]

Slide [2] - [pixabay] - [gettyimages] - [pianokeys]

Slide [4] - [ARKSMP] - [ARKMusic] - [swungquaversandtriplets]

Slide [4] - [ARKSMP] - [ARKMusic] - [doubleshuffledrumpattern]

Slide [3, 5] - [flack] - [leonafriar] - [chordsandbrokenchords]

