

# Number Sense

**Using an ‘adding on’ strategy to find the difference**



# Independent Task

Let's explore! Time to go shopping

What are we going to buy with £10.00?



Football £3 and 99 p,



Popcorn £1 and 49 p,



Colouring book £2 and 45 p,



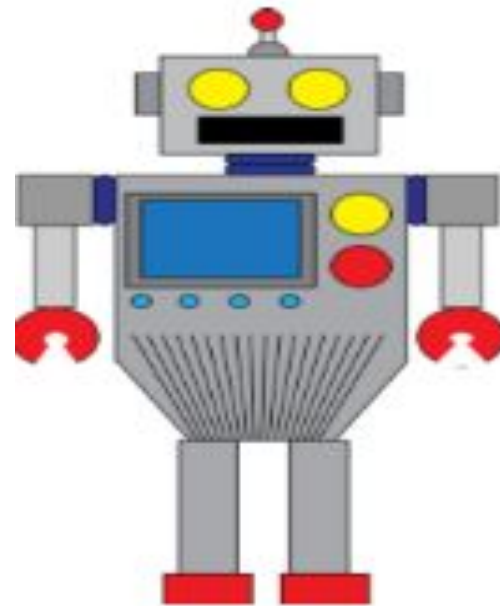
Model car £8 and 20 p,



Puppet £6 and 55 p,



Torch £5 and 38 p,



Robot £8 and 89 p,



Radio £7 and 59 p,

