

Ecological relationships and classification

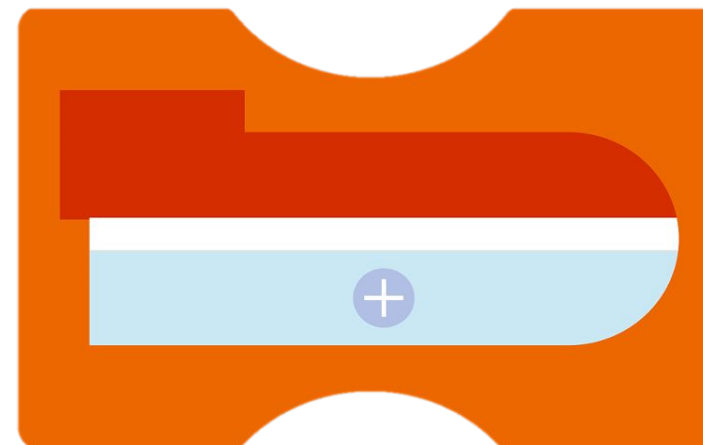
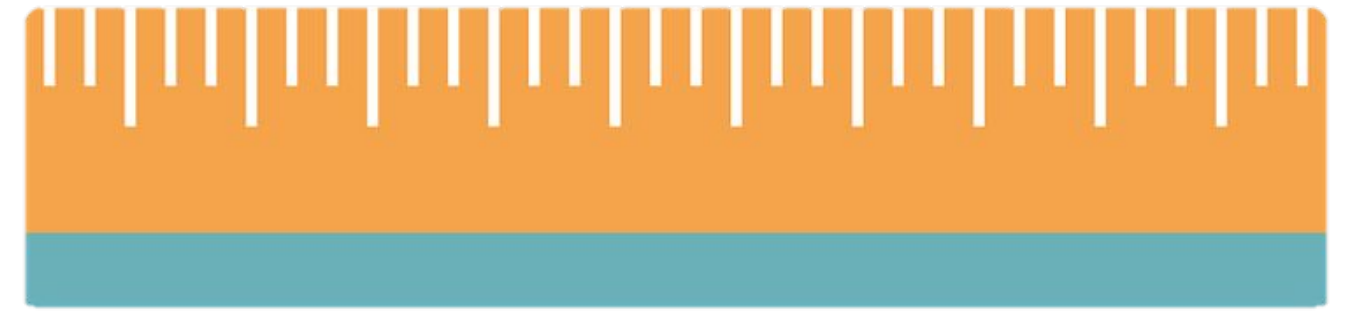
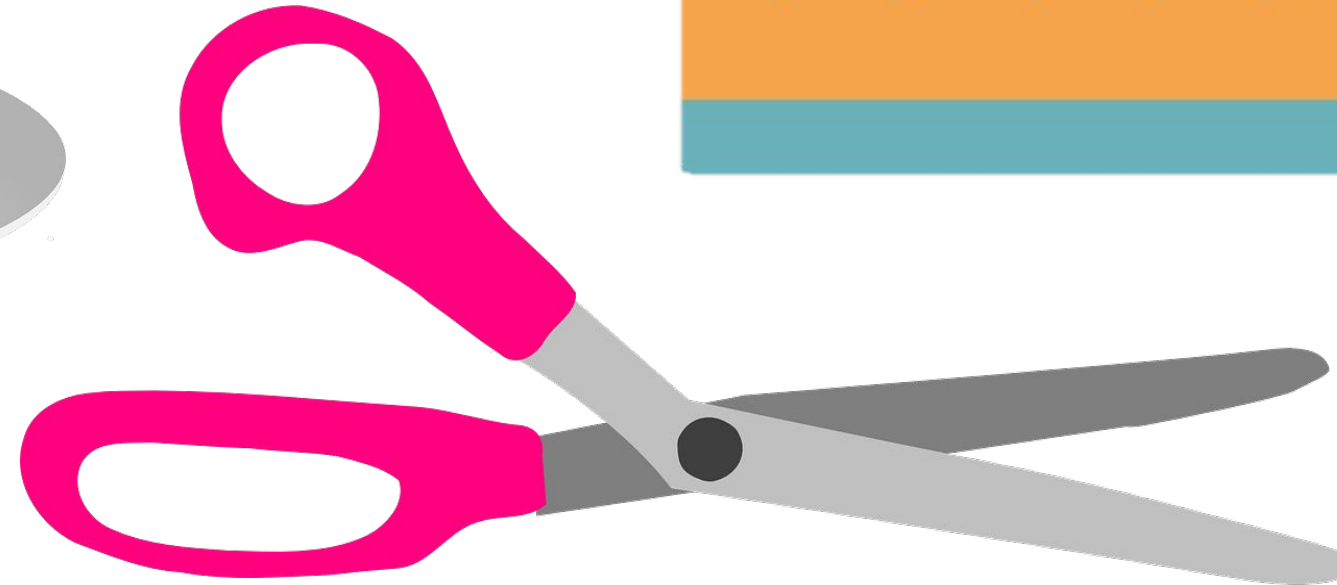
Lesson 7 - Classifying Living Organisms

Biology - Key Stage 3

Miss Lewis



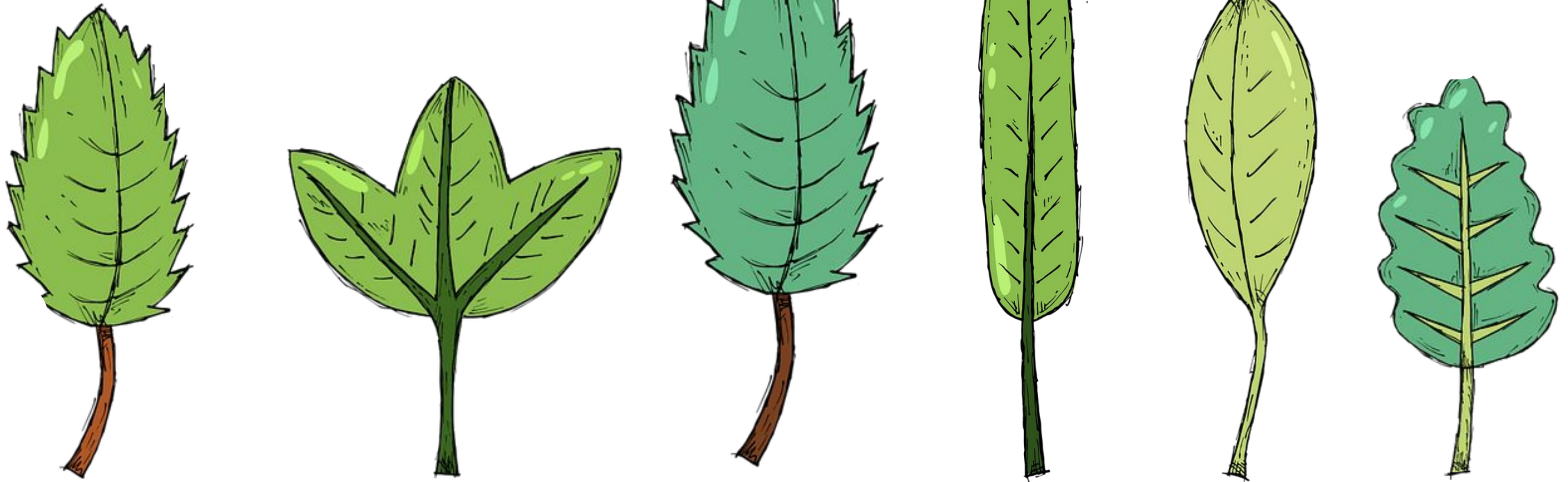
How would you separate these object into two groups based on their characteristics?



Credit: Pixabay



How would you separate these organisms into two groups based on their characteristics?



Credit: Pixabay



Task

Describe how organisms are classified using this system.

Organisms are divided into main groups called

At each level the groups are sorted into groups based on

As you move down the system, the size of each group

As you move down the system, the organisms within each group have



Credit: Miss Lewis



This is the classification for a donkey

What is the family?

Animalia

Chordata

Mammalia

Perissodactyla

Equidae

Equus

afRicanus



Credit: Pixabay



This is the classification for the great white shark? What is the class?

Animalia

Chordata

Chondrichthyes

Lamniformes

Lamnidae

Carcharodon

carcharias



Credit: Pixabay



This is the classification for a red pine tree. What is the phylum?

Planae

Tracheophytes

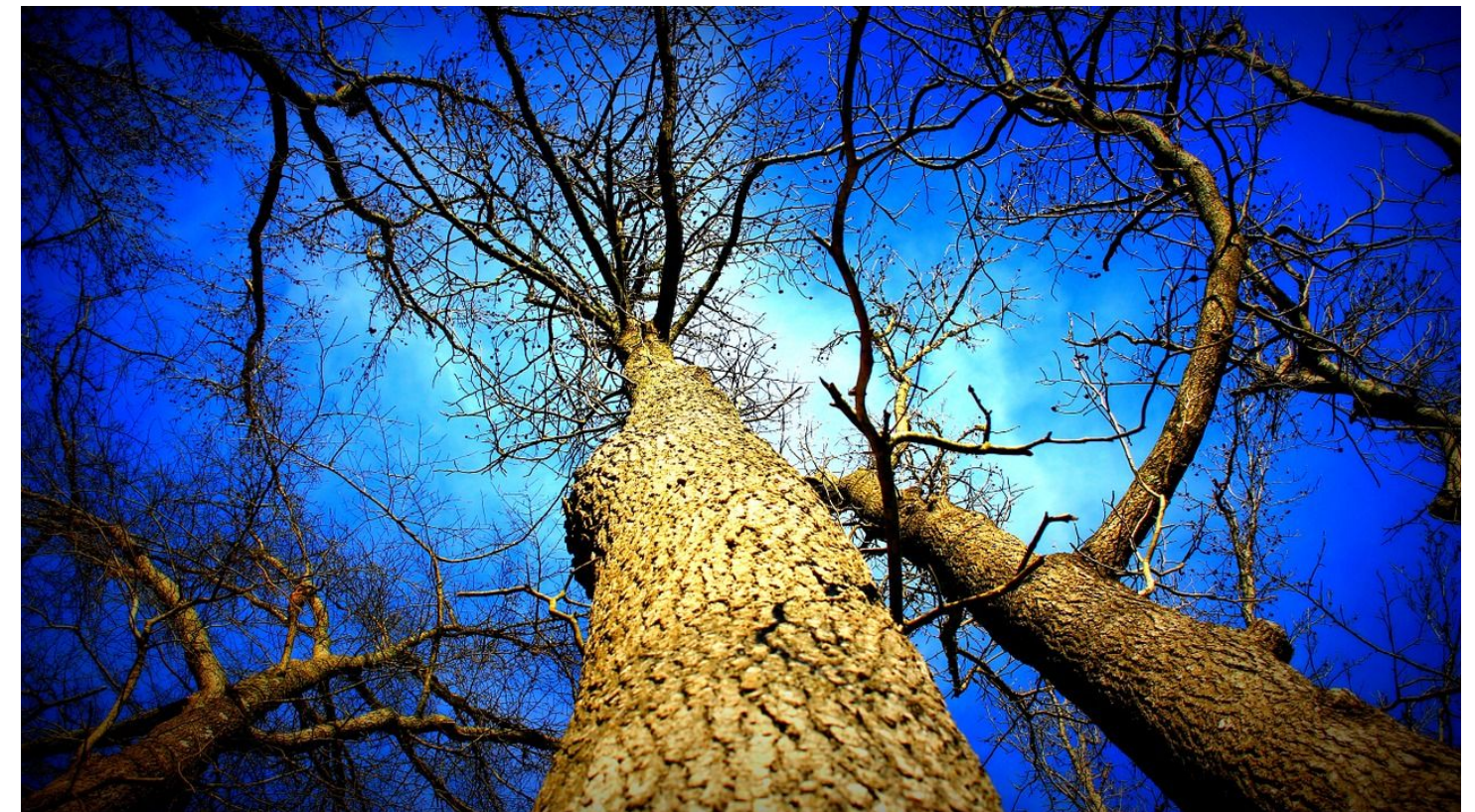
Pinopsida

Pinales

Pinaceae

Pinus

densiflora



Credit: Pixabay



Which chordate group am I in?

Why?



Salamander

Credit: Pixabay



Which chordate group am I in? Why?

Giraffe



Credit: Plxabay



Which chordate group am I in?
Why?



Piranha

Credit: Pixabay



Which chordate group am I in?

Why?

Macaw



Credit: Plxabay



Task

- 1. Complete the order of the Linnaean system in the first column.
- 2. Which organism is in a different kingdom?
- 3. Which animal does not have a spinal cord?
- 4. Which organisms are in the same class?
- 5. Which two organisms are the most closely related? How do you know from the table?

Common Name	Oak tree	Crab	Tiger	Wolf	Lion
K	<i>Plantae</i>	<i>Animalia</i>	<i>Animalia</i>	<i>Animalia</i>	<i>Animalia</i>
P	<i>Tracheophytes</i>	<i>Arthropoda</i>	<i>Chordata</i>	<i>Chordata</i>	<i>Chordata</i>
	<i>Angiosperms</i>	<i>Crustacea</i>	<i>Mammalia</i>	<i>Mammalia</i>	<i>Mammalia</i>
	<i>Fagales</i>	<i>Decapoda</i>	<i>Carnivora</i>	<i>Carnivora</i>	<i>Carnivora</i>
	<i>Fagaceae</i>	<i>Portunidae</i>	<i>Felidae</i>	<i>Canidae</i>	<i>Felidae</i>
	<i>Quercoidae</i>	<i>Carcinus</i>	<i>Panthera</i>	<i>Canis</i>	<i>Felis</i>
	<i>Quercus</i>	<i>maenas</i>	<i>tigris</i>	<i>lupus</i>	<i>domesticus</i>



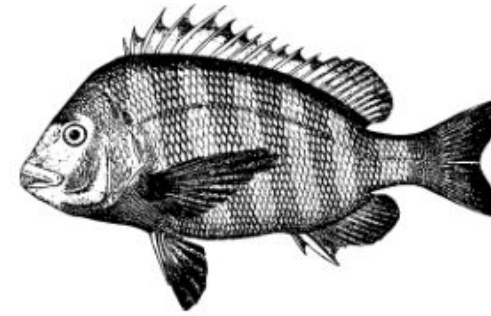
Task

Eight living things are drawn.

Give the letters of:

- a) **one** living thing which uses gills to take in oxygen;
- b) **one** living thing which produces seeds;
- c) **one** living thing which uses lungs to breathe
- d) **two** living things which lay eggs in water
- e) **two** living things which are covered in scales.

A: Trout



B: Tadpole



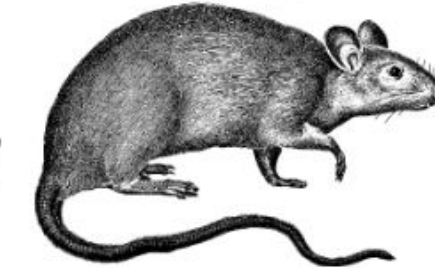
C: Duck



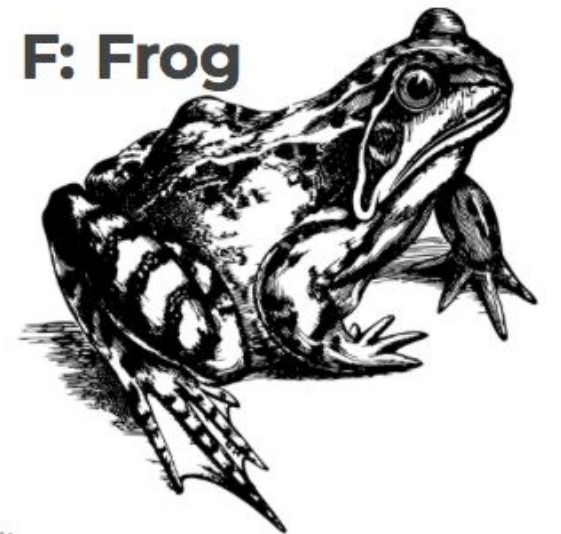
D: Crocodile



E: Rat



F: Frog



G: Dandelion



H: Oak tree



What makes the tomato a fruit?

