

Maths

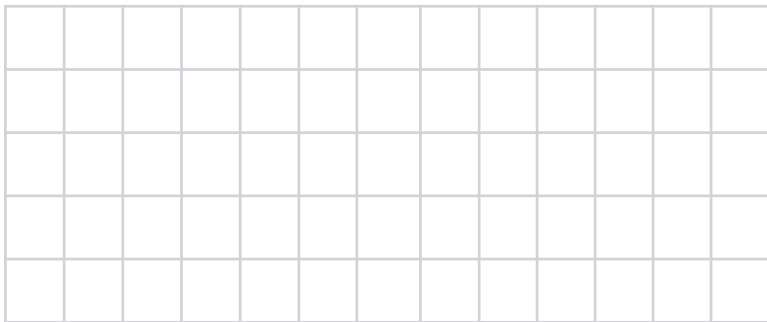
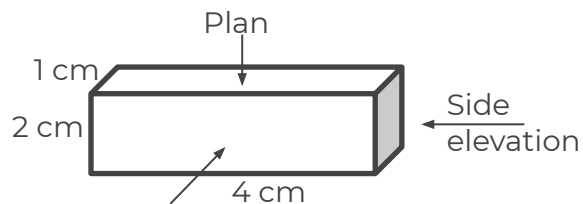
Draw Plan Views and Elevations of 3D Shapes

Mr Bond

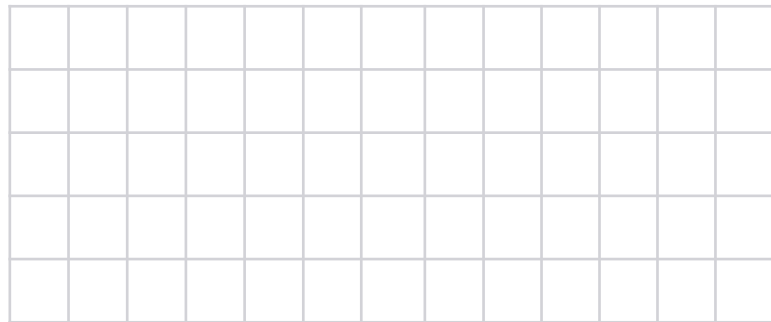
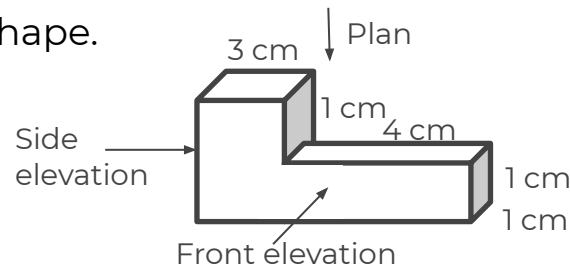


Draw plan views and elevations of 3D shapes

1. On the grid paper below draw the plan view, side elevation and front elevation of the cuboid.



2. On the grid paper below draw the plan view, side elevation and front elevation of the 3D shape.

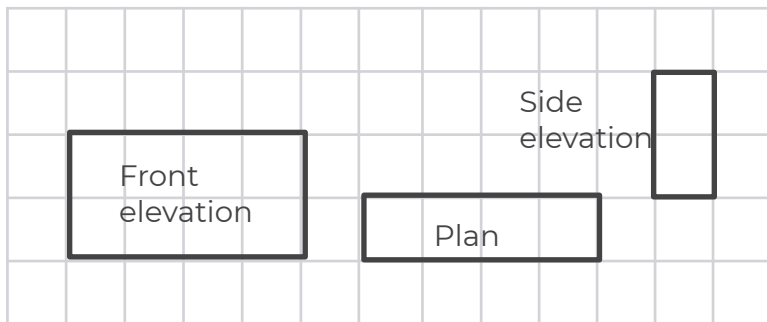
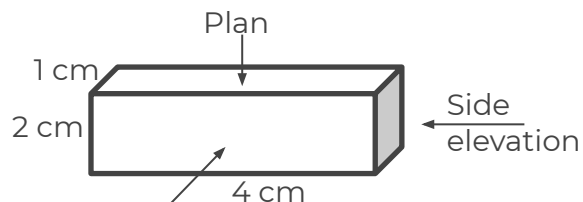


Answers



Draw plan views and elevations of 3D shapes

1. On the grid paper below draw the plan view, side elevation and front elevation of the cuboid.



2. On the grid paper below draw the plan view, side elevation and front elevation of the 3D shape.

