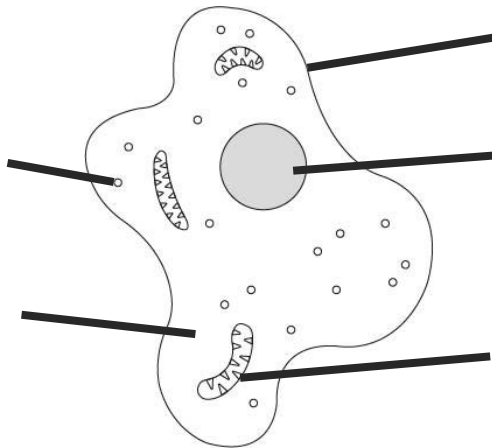


Cell structures



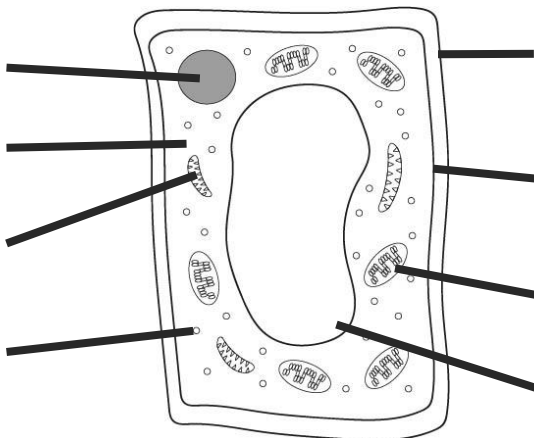
Task 1: Sub-cellular structures of animal cells

Label the sub-cellular structures of this animal cell.



Task 2: Sub-cellular structures of plant cells

a) Label the sub-cellular structures of this plant cell.



b) Complete the table to describe the function of each structure.

Structure	Function
cytoplasm	
	contains DNA that controls the cell activities
	where proteins synthesis occurs
mitochondria	
chloroplast	
	controls what enters and exits the cell
vacuole	
cell wall	



Task 3: Compare the structure of plant and animal cells

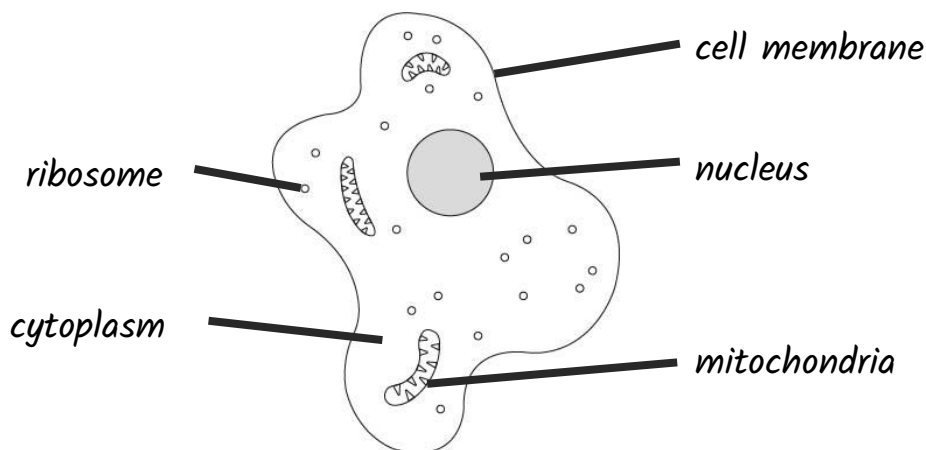
a) **Describe** the differences in structure between plant and animal cells. You should refer to the sub-cellular structures within your answer.

b) **Why** does a plant cell needs chloroplasts but an animal cell does not?



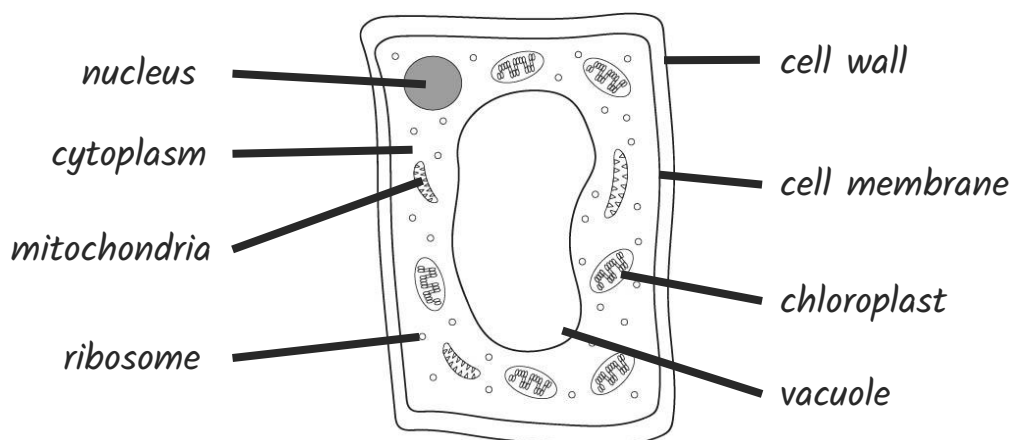
Task 1: Sub-cellular structures of animal cells

Label the sub-cellular structures of this animal cell.



Task 2: Sub-cellular structures of plant cells

a) Label the sub-cellular structures of this plant cell.



b) Complete the table to describe the function of each structure.

Structure	Function
cytoplasm	<i>jelly-like substance where chemical reactions occur</i>
nucleus	contains DNA that controls the cell activities
ribosome	where proteins synthesis occurs
mitochondria	<i>where aerobic respiration occurs</i>
chloroplast	<i>where photosynthesis takes place</i>
cell membrane	controls what enters and exits the cell
vacuole	<i>contains sap that keeps the cell firm</i>
cell wall	<i>provides strength and structure to the cell</i>



Task 3: Compare the structure of plant and animal cells

a) **Describe** the differences in structure between plant and animal cells. You should refer to the sub-cellular structures within your answer.

- *Both plant and animal cells contain a cell membrane, cytoplasm, mitochondria and ribosomes.*
- *However, a plant cell also contains chloroplasts, a vacuole and a cell wall which are not present in an animal cell.*

b) **Why** does a plant cell need chloroplasts but an animal cell does not?

- *Chloroplasts are where photosynthesis takes place.*
- *Plants photosynthesise to produce glucose but animal cells do not photosynthesise.*
- *Animal cells get their glucose from food and drink.*