

Biology- Key Stage 3

Lesson 1 - Plants and Photosynthesis

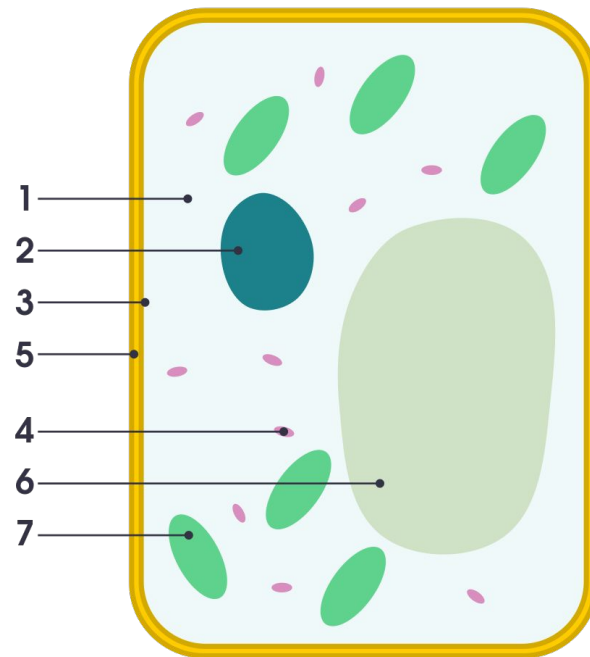
# Plant Roots

Miss White



# Name the parts of the plant cell

1. \_\_\_\_\_
2. \_\_\_\_\_
3. \_\_\_\_\_
4. \_\_\_\_\_
5. \_\_\_\_\_
6. \_\_\_\_\_
7. \_\_\_\_\_



## Match the organelle to its function

<u>Organelle</u>	<u>Function</u>
<b>Cytoplasm</b>	
<b>Nucleus</b>	
<b>Cell Membrane</b>	
<b>Mitochondria</b>	
<b>Cell Wall</b>	
<b>Vacuole</b>	
<b>Chloroplasts</b>	



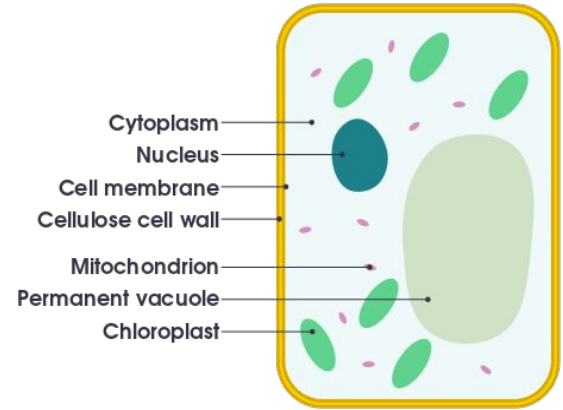
# Self-assess

1. What is the role of the root hair cell?
2. State two adaptations a root hair cell has
3. Explain why one of these adaptations is important

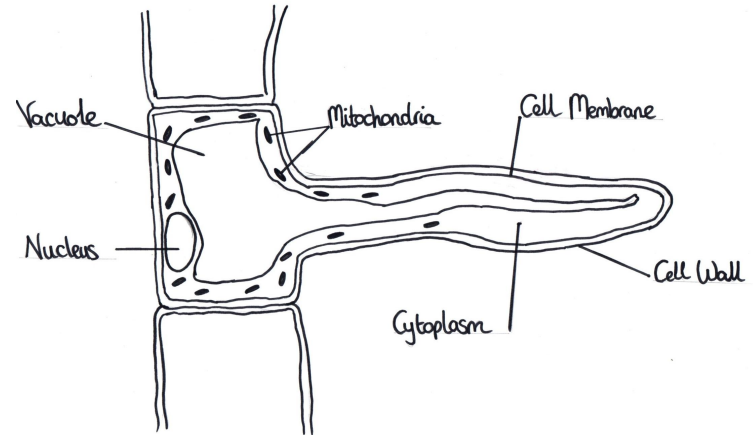


## Compare a root hair cell to a typical plant cell

A root hair cell is similar to a typical plant cell because...



A root hair cell is different to a typical plant cell because...



## Have a go...

- 1. What is the role of the roots?** The role of the roots is to absorb \_\_\_\_\_ and \_\_\_\_\_ from the \_\_\_\_\_.
- 2. By which process does water enter the roots?** Water enters the plant by \_\_\_\_\_.
- 3. Why does having a long membrane help the root hair cells to take in more water?** Roots have a long membrane because...
- 4. Why do root hair cells have lots of mitochondria?** Root hair cells have lots of mitochondria because...

