

Maths

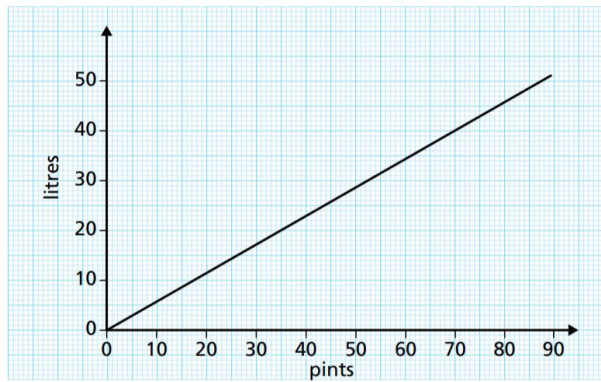
# Using direct proportion graphs

Mr Clasper



# Using direct proportion graphs

1. This conversion graphs can be used to convert between pints and litres.



Use the graph to convert

a) 60 pints into litres

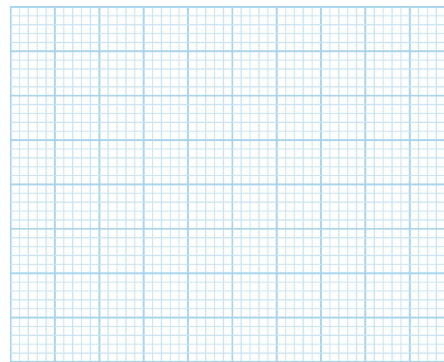
b) 10 litres into pints

c) 1000 litres into pints

2. Table shows the pounds you get for different values of euros.

Pounds	10	20	40	80	100
Euros	11	22	44	88	110

a) Draw a graph to represent this.



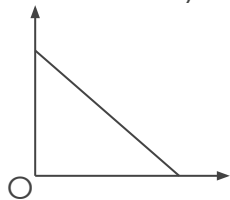
b) Explain how you know the currencies are in direct proportion.



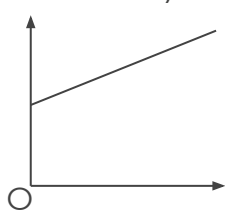
# Using direct proportion graphs

3. Decide whether each graph shows a direct proportion relationship.

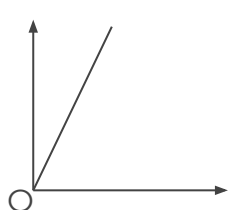
a)



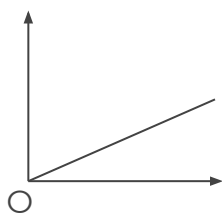
b)



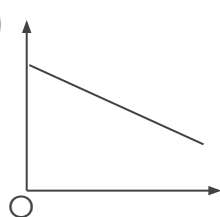
c)



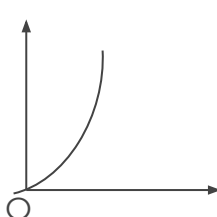
d)



e)



f)

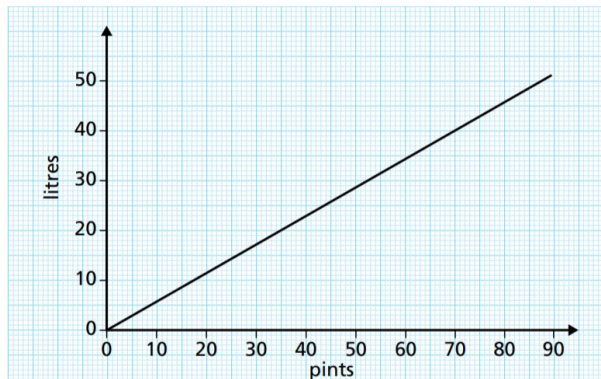


# Answers



# Using direct proportion graphs

1. This conversion graphs can be used to convert between pints and litres.



Use the graph to convert

a) 60 pints into litres **34 litres**

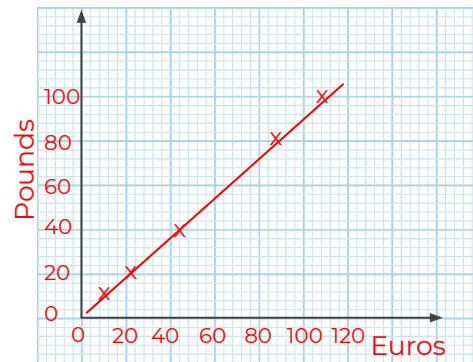
b) 10 litres into pints **18 pints**

c) 1000 litres into pints **1800 pints**

2. Table shows the pounds you get for different values of euros.

Pounds	10	20	40	80	100
Euros	11	22	44	88	110

a) Draw a graph to represent this.



b) Explain how you know the currencies are in direct proportion.

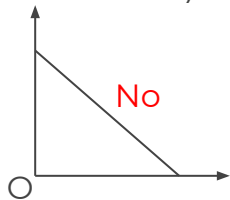
Graph is a straight line that passes through origin



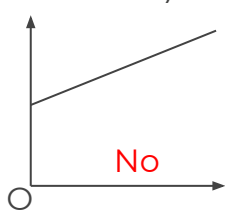
# Using direct proportion graphs

3. Decide whether each graph shows a direct proportion relationship.

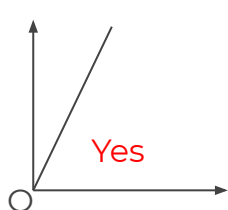
a)



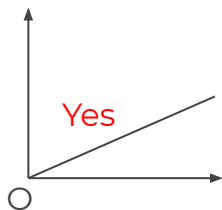
b)



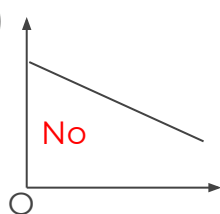
c)



d)



e)



f)

