

Music

**How can you, as a composer, make a structure interesting?**

Miss Charatan

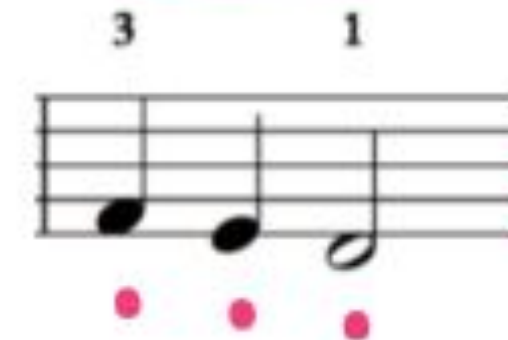
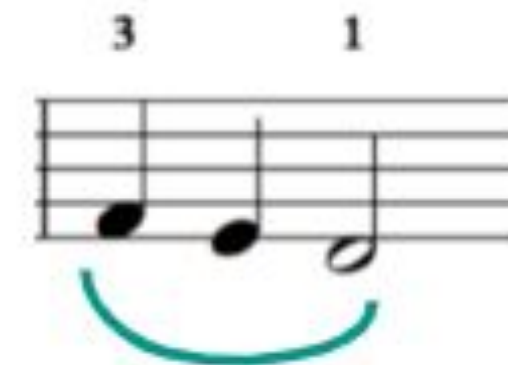


# Quick recap - list the ways you can make a melody more interesting and elaborate:

- **O** 
  - T
  - M
  - G  n
- **P**  n
- **R**  (d )
- **Articulation** (s  and l )



A F#



# Question: do you know any parts of a musical structure already?

- What do you call the beginning of a song or piece of music? What do you call the end?
- What do you call the catchy section of a song that repeats, with the same lyrics each time?
- What do you call the sections of a song that repeat, with different lyrics?



# Musical structures



## Binary form

- Two main sections (contrasting).
- Baroque dances (gigue, minuet, sarabande).
- Bach Minuet in G major BWV anh 114.



# Musical structures



## Ternary form

- Three main sections, contrasting one in middle.
- Da Capo Aria.
- A section is often varied on repeat.



# Musical structures



## Rondo Form

- Returning A section 'ritornello.'
- 'Für Elise' by Beethoven is an example of a piece in Rondo form.



# Fugue



- A type of texture, but also structure.
- Popular Baroque form, but very complicated.
- J.S. Bach wrote 48 Preludes and Fugues (and even more than that!).



# Melodies 1 and 2

1

F# E D C# B A B C#

2

D C# B A G F# G E





3

D F# A G F# D F# E

D B D A G B A G

4

A F# F#G F#E D D D E D C#

B D D C B C A

5

F# D E D F# A B G A F# D D D C#

6

D A A B A G F# F# F#G F#E D C B C A A G D C#



**Chords**

**Ground  
Bass**

A musical score for a piece in D major, 4/4 time. The score consists of two staves. The top staff, labeled 'Chords', shows a sequence of eight chords: D, A, Bm, F#m, G, D, G, and A. Each chord is represented by a whole note chord symbol above a whole note chord in the treble clef. The bottom staff, labeled 'Ground Bass', shows a sequence of eight eighth notes: D, A, B, F#, G, D, G, and A. Each note is represented by a whole note in the bass clef. The key signature is one sharp (F#) and the time signature is 4/4. The piece ends with a double bar line and repeat dots.

Measure	Chord	Ground Bass Note
1	D	D
2	A	A
3	Bm	B
4	F#m	F#
5	G	G
6	D	D
7	G	G
8	A	A



# Binary form



Melody 1

Your own melody



# Rondo Form



# Da Capo Aria

A

B

A

**Ternary form**

- An aria is a song, often part of a larger piece of music.
- 'Da Capo' - from the head (go back to the beginning and play that bit again).
- The A section was varied the second time it was sung.



# References

- Slide [2] - [Wikimedia Commons] - [Kisipila] - [ Upper.lower.mordent.notation] - Attribution: Kisipila / CC0]
- Slide [2] - [Wikimedia Commons] - [Denelson83] - [Trill notation]
- Slide [2] - [Wikimedia Commons] - [Camembert] - [Acciaccatura notation] - [Attribution: Camembert at the English language Wikipedia / CC BY-SA]

