

Bearings and compass points

Downloadable Resource

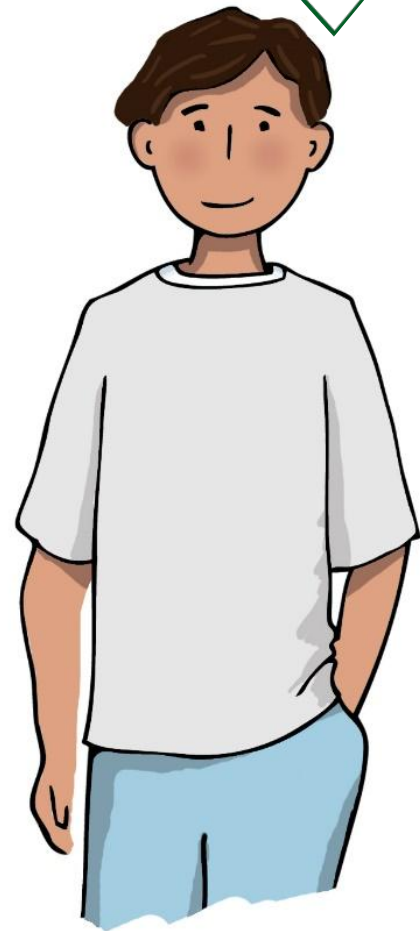
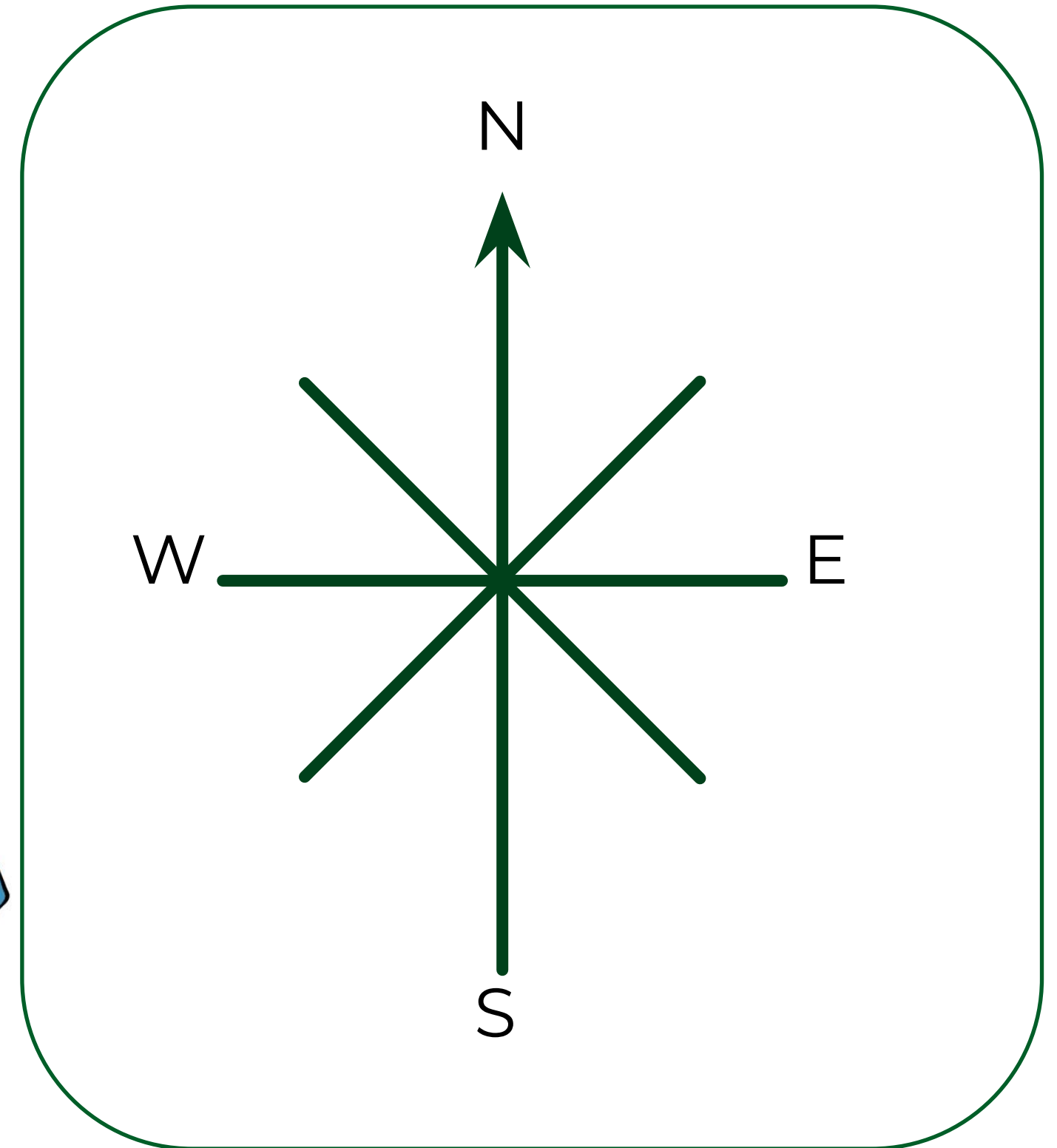


Try this

What angle statements can you make from this diagram?

The angle from S to NW is a 135° !

The angle from N to E is a right angle!

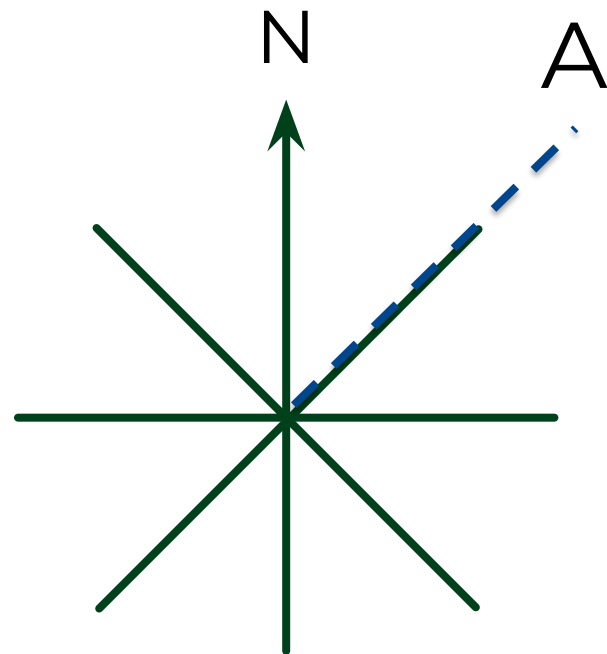


Independent task

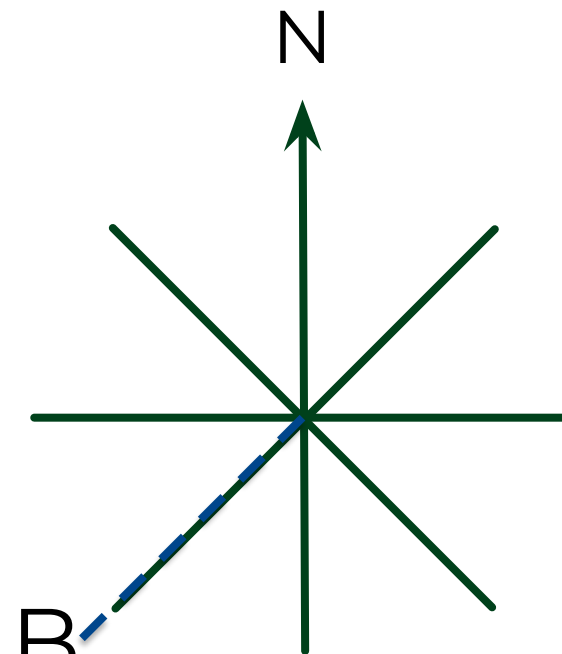
1) What are the bearings of these directions?

a) South b) South-West c) North-East d) North-West

2) Can you correct the **mistakes** in these two diagrams



Bearing = 45°



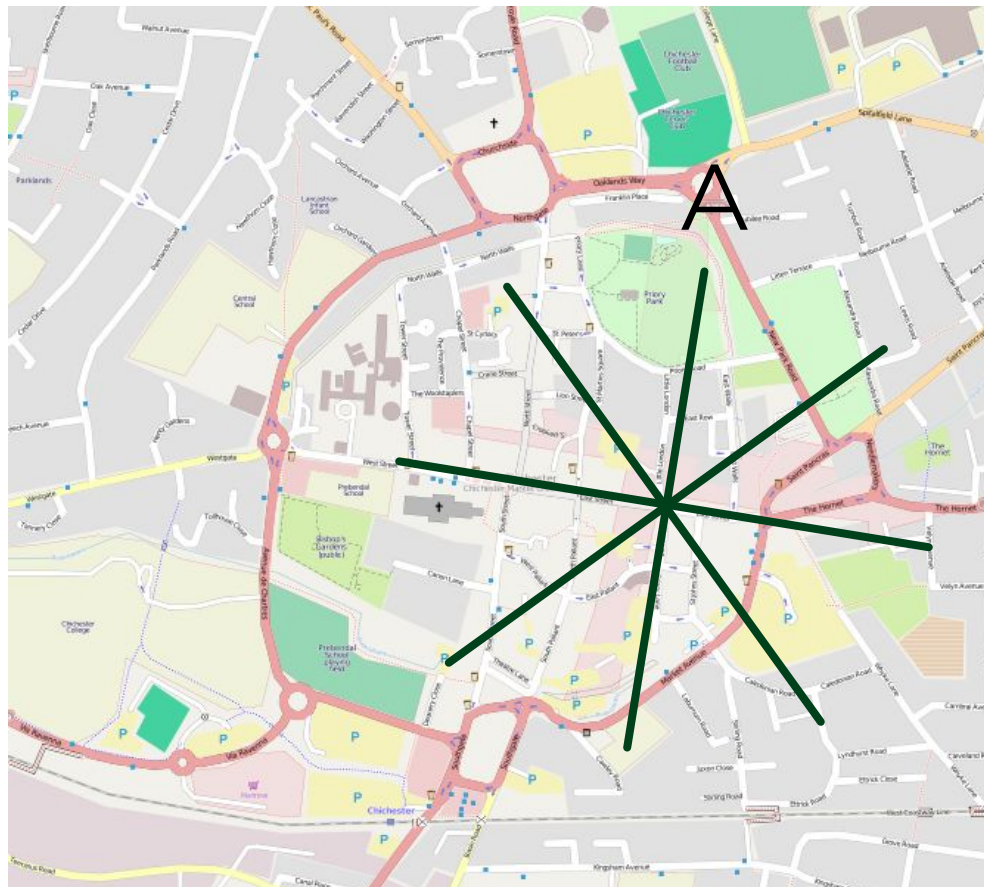
Bearing = 135°



Independent task

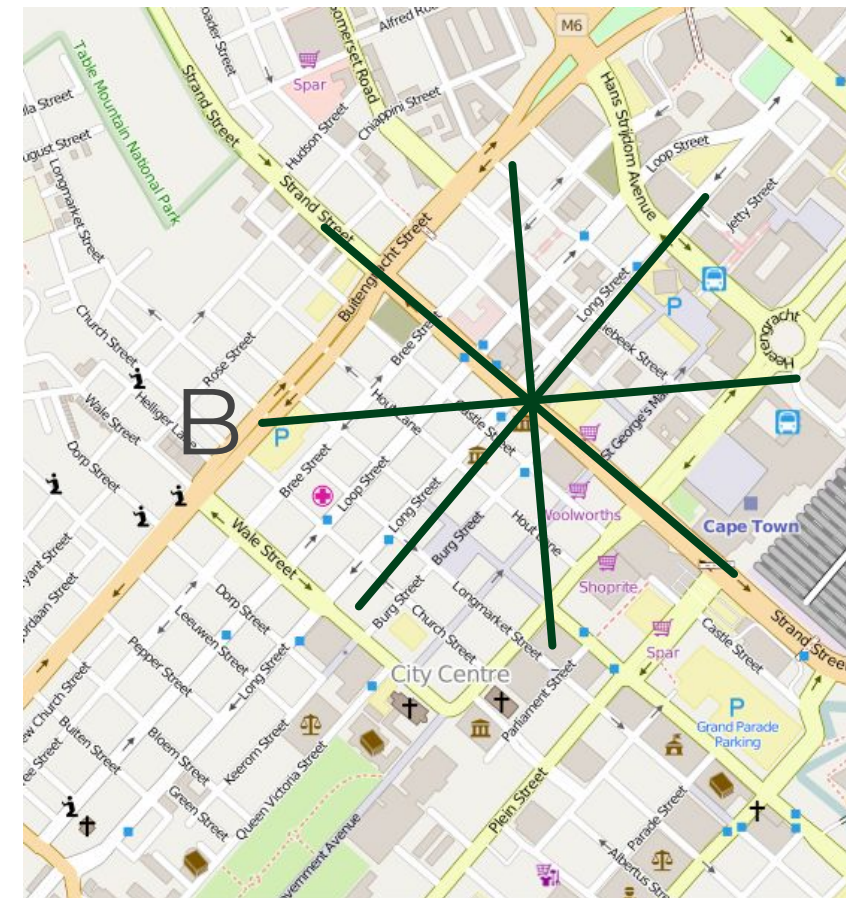
- 3) The maps below have been rotated, so we cannot tell which direction north is. Can you work out which direction North is if:

A is at a bearing of 90°



Contributed by James Brigden, distributed under a [CC-BY 2.0 license](#)

B is at a bearing of 045°



Contributed by openStreetMap, distributed under a [CC-BY 2.0 license](#)



Explore

What direction is each student walking in?

Which students will pass the same point on their walk?

