

Mathematics

Angles

Downloadable Resource – Measuring and drawing angles.

Mr. Thomas

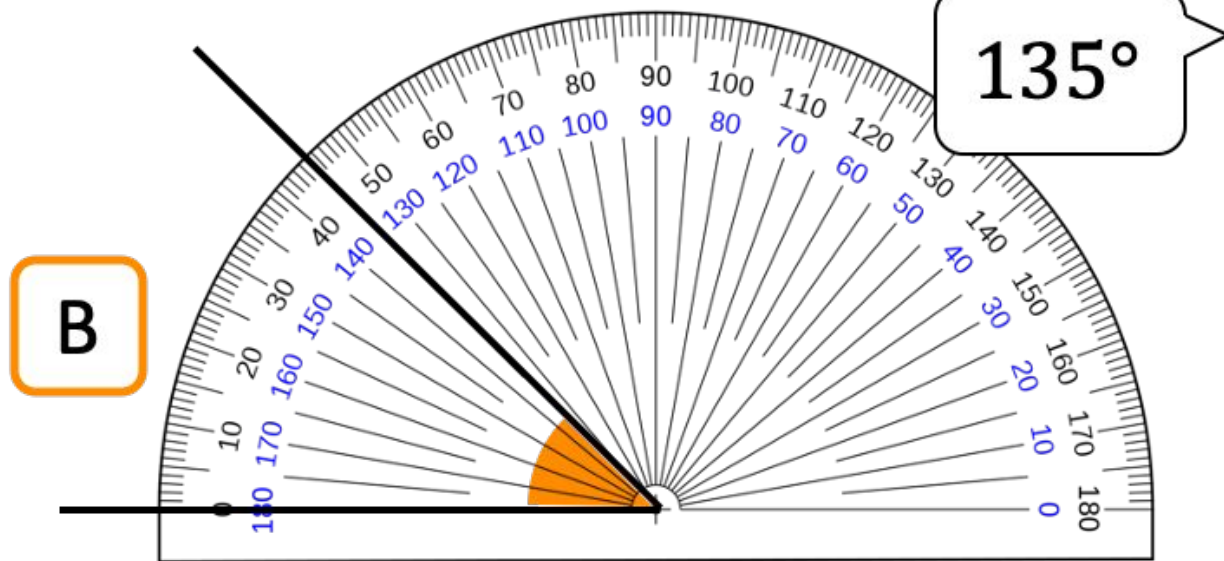
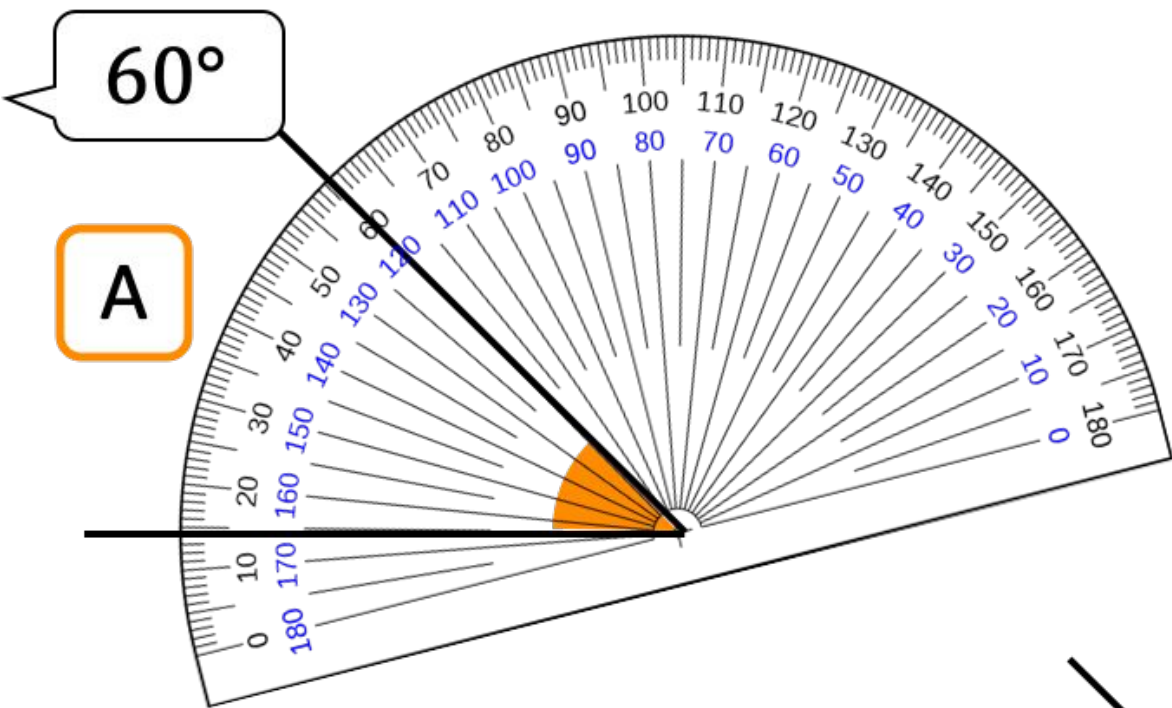


Try this

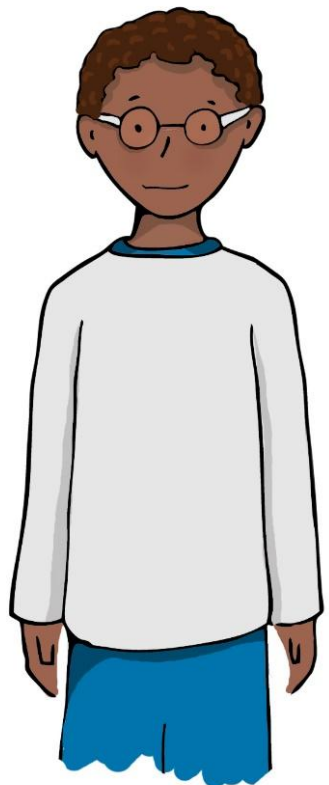
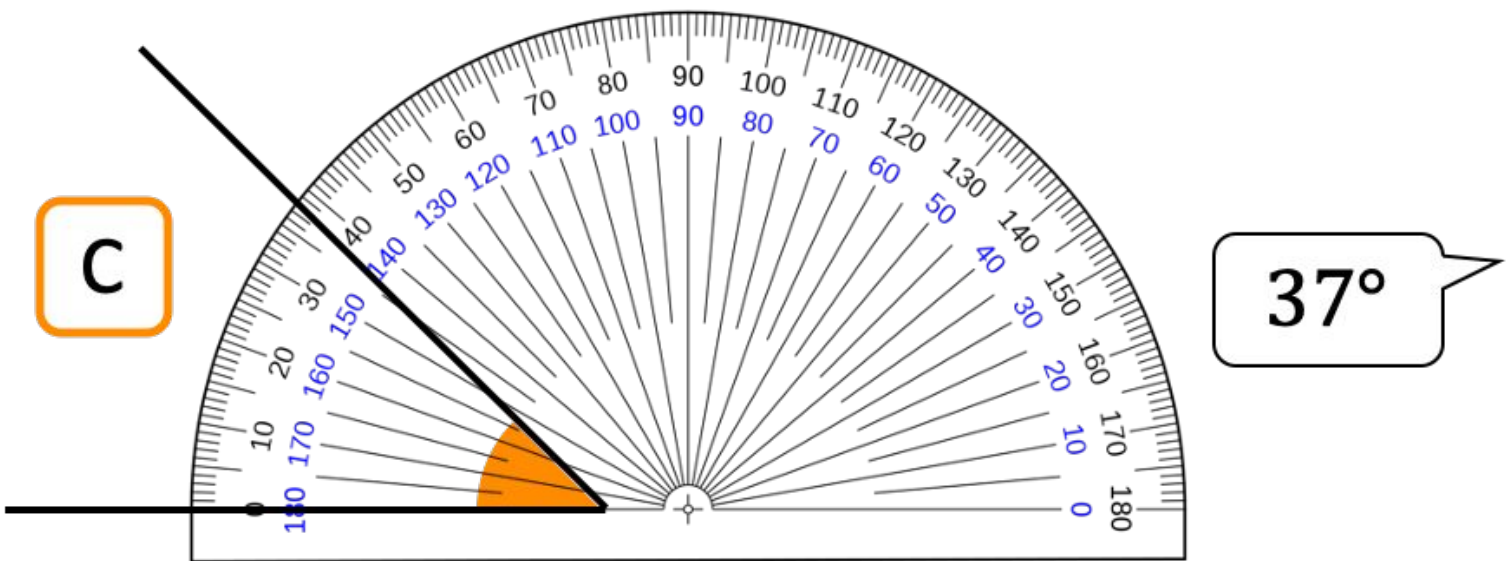
The students below have got these angles wrong. Can you explain why?



Cala



Xavier



Zaki



Connect

Lets learn how to measure angles using a protractor...

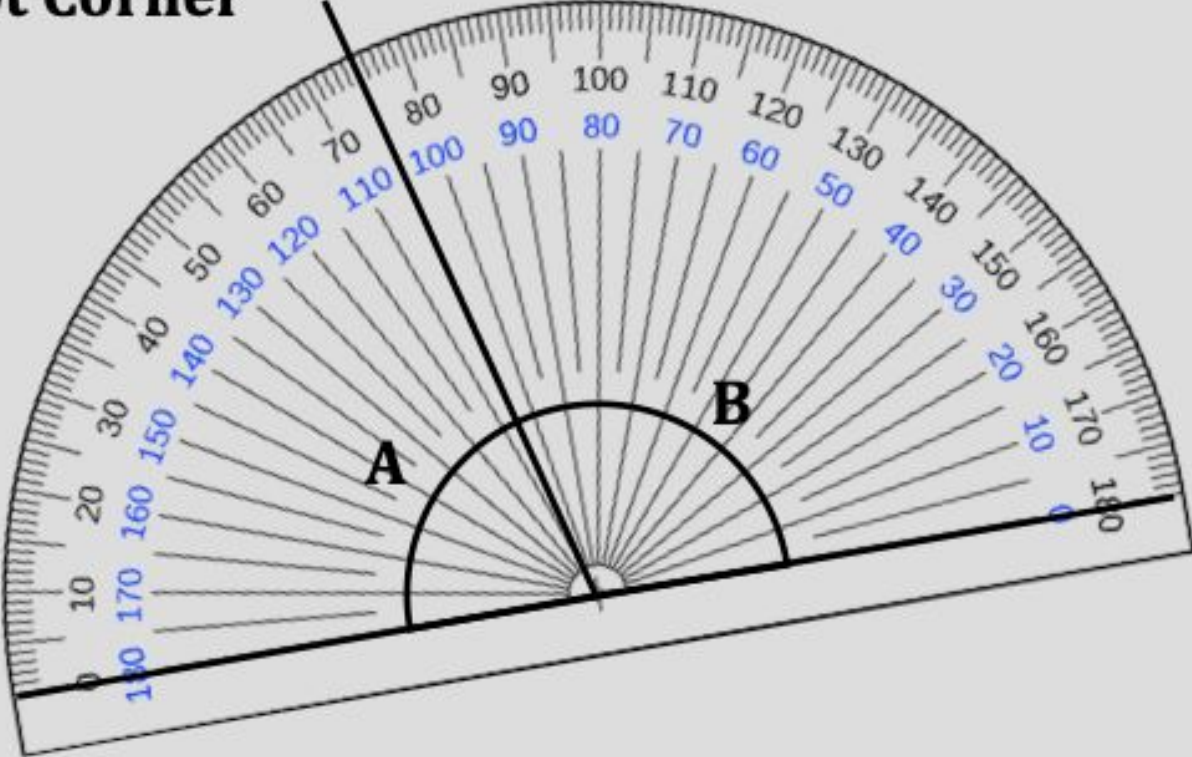
International GeoGebra Institute, 2013



Independent Task

Fill in the blanks for the following exercise. You may want to go back in the video for some help.

Concept Corner



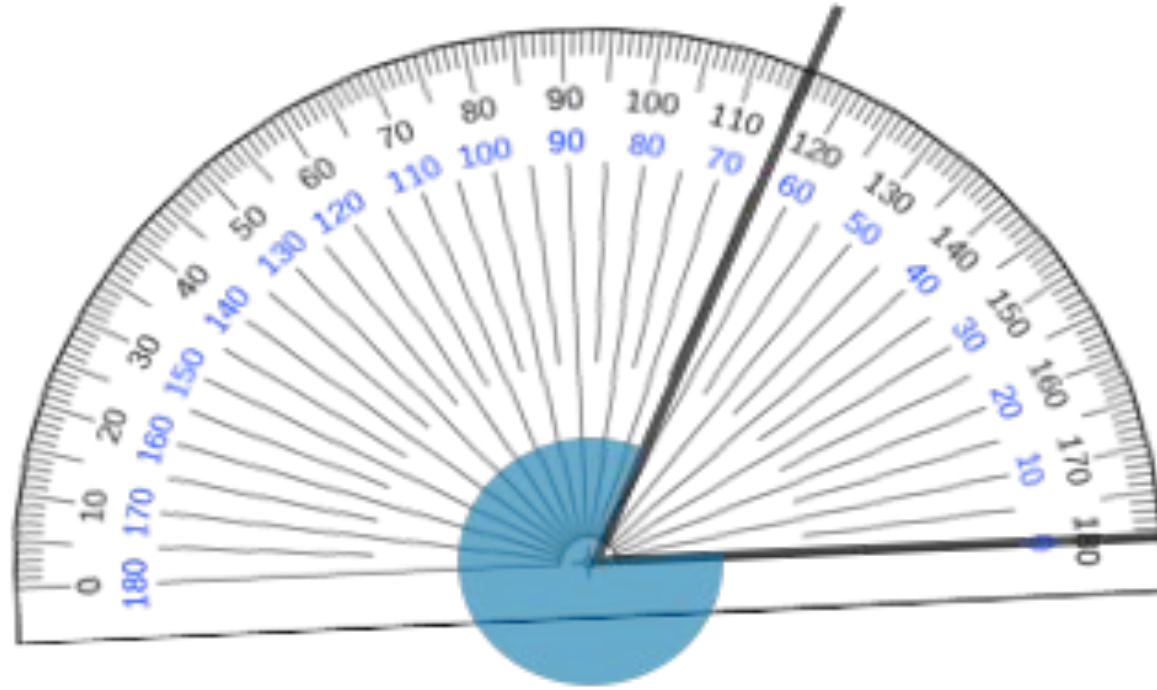
We can use a _____ to measure an angle. For example in order to measure angle A we can use the _____ scale to see that it has a value of _____. In order to measure angle B we can use the _____ scale to see that it has a value of _____.

75°	protractor
105°	outside
	inside



Explore

Both of these students have incorrectly measured the angle.



I think the angle is 115°

How can you use Yasmin's answer to arrive at the correct measurement?



I think the angle is 65°

How can you use Binh's answer to arrive at the correct measurement?

