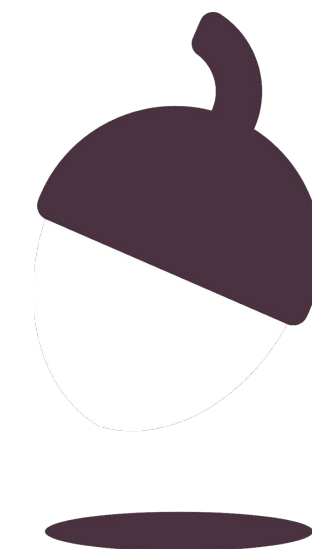


Combined Science - Biology - Key Stage 4

# Evidence for Evolution - Part 1

Mrs Gibbs



**OAK**  
NATIONAL  
ACADEMY

# What is a fossil?

---

---

---



- Fossils are made from the h\_\_\_\_\_ parts of organisms that don't d\_\_\_\_\_ easily e.g. \_\_\_\_\_.
- The hard parts are then replaced by m\_\_\_\_\_.
- Other traces of an organism can be preserved e.g. a f\_\_\_\_\_ p\_\_\_\_\_.
- Sometimes fossils can form from parts of organisms that have not d\_\_\_\_\_ because there was no o\_\_\_\_\_, no m\_\_\_\_\_ or it was too c\_\_\_\_\_.



# What does the fossil record show us?

1) \_\_\_\_\_  
\_\_\_\_\_

2) \_\_\_\_\_  
\_\_\_\_\_

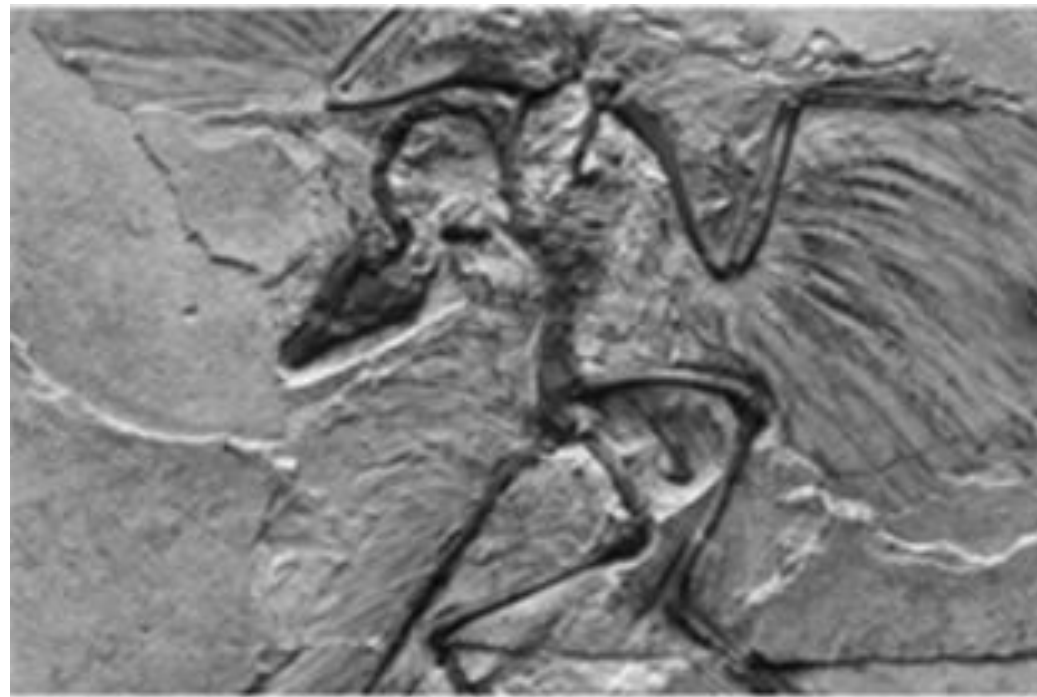
**Key words: change, time, evolved, common, ancestor**



# Exam question

Archaeopteryx was a bird that had some features of a reptile.

Archaeopteryx is now extinct, but fossil evidence of its existence has been found.



Darwin believed that living things gradually changed to become new species.

Suggest how **Archaeopteryx** fossil evidence supports Darwin's theory. **(2)**

