

Mathematics

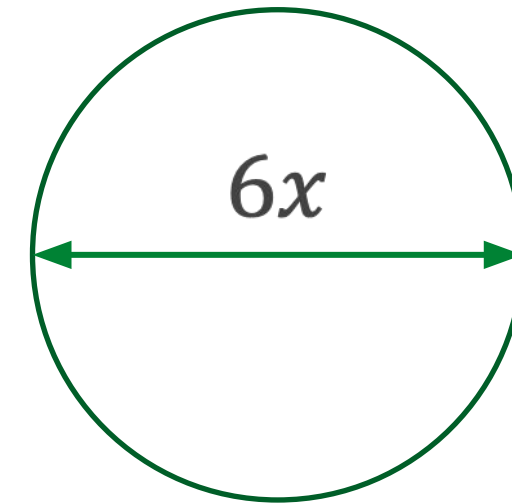
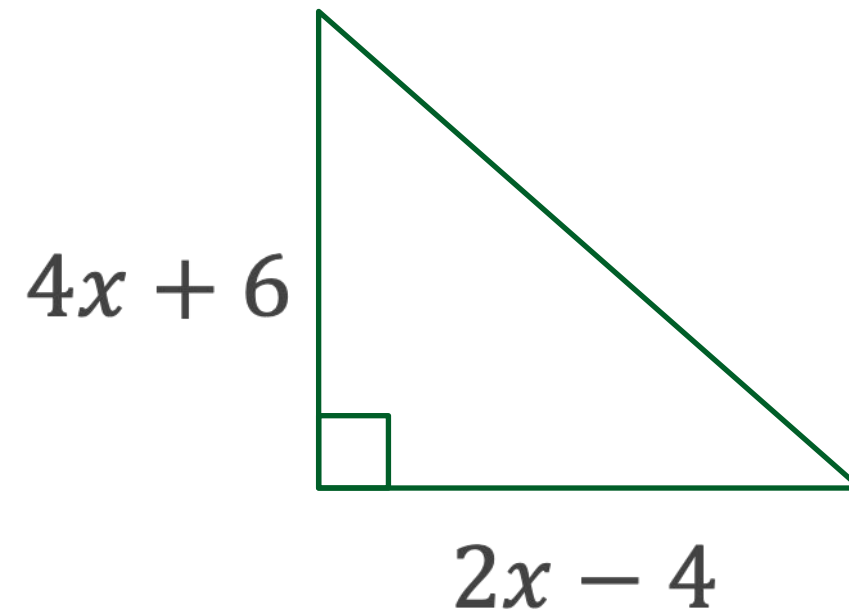
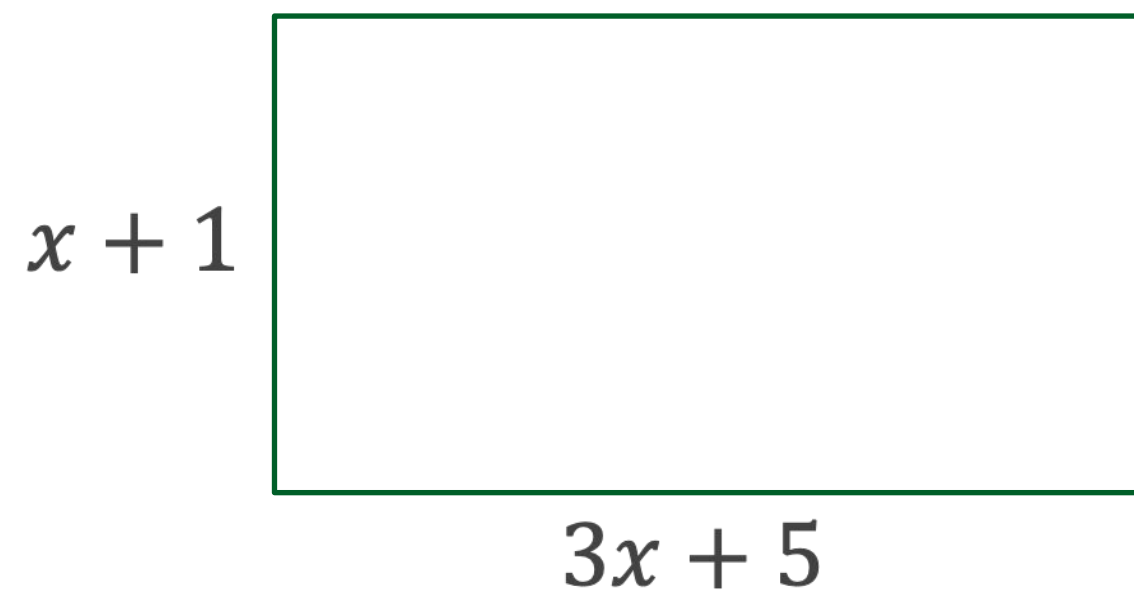
# Forming quadratic equations II

Mr Coward



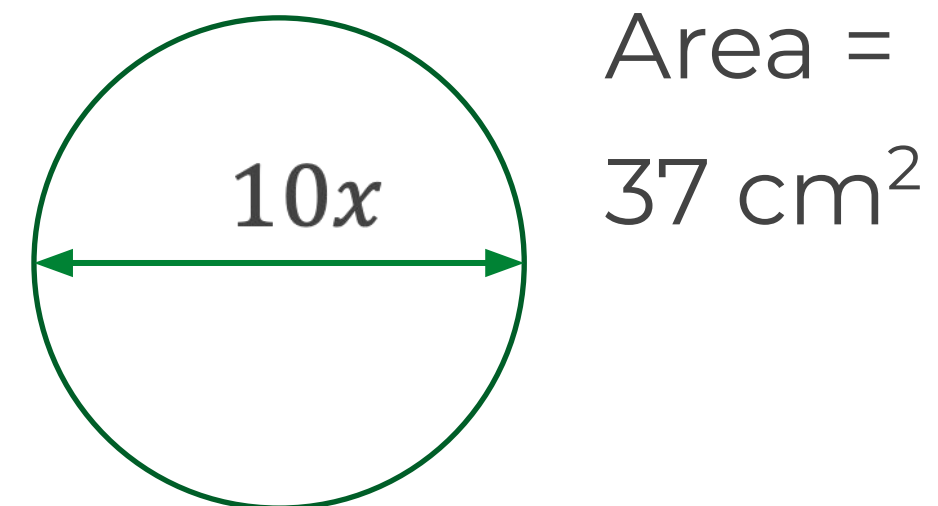
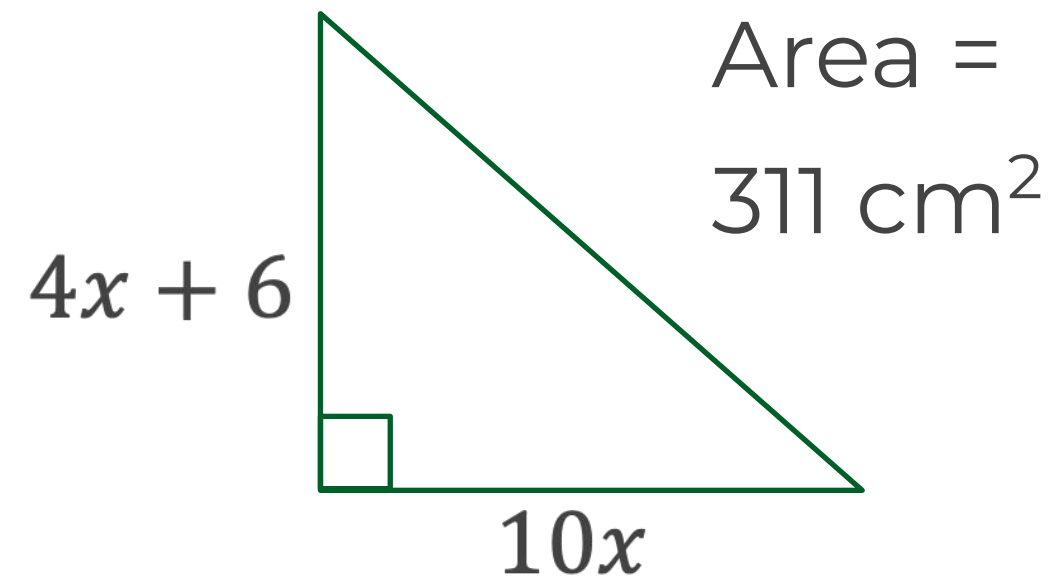
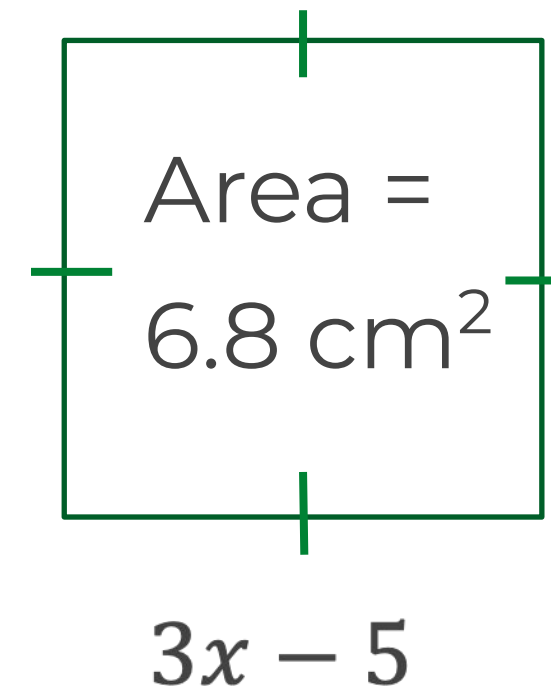
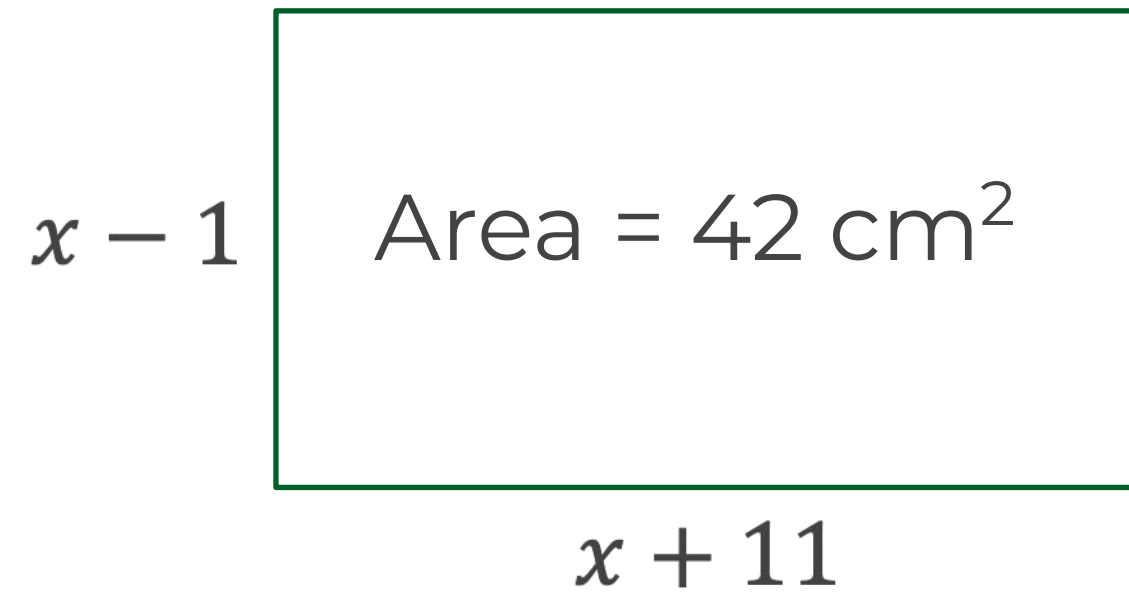
# Try this

Find the area of these shapes in terms of  $x$ .



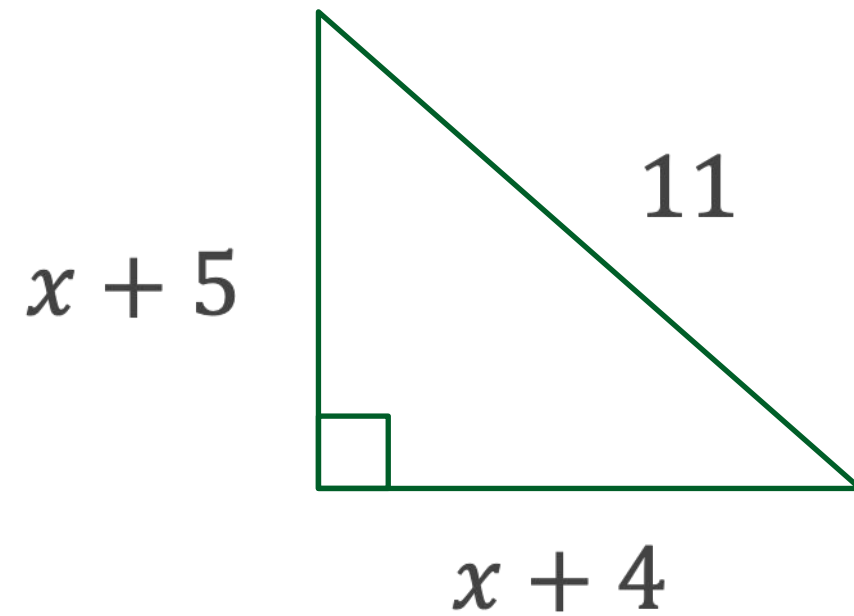
# Independent task

1) Form a quadratic equations for the area of these shapes.



# Independent task

2) Form a quadratic equations for the length of the hypotenuse squared.



# Explore

The surface area equals  $200\text{cm}^2$ .

The volume equals  $420\text{cm}^3$ .

Form two equations. What do you notice about your equations?

