

Music

Unit 3 Lesson 11

How is a blues melody structured?

Ms Friar



Composing a blues 'head'

G	G	G	G
C	C	G	G
D	C	G	G/D

1. Compose a 2 bar blues 'head'.
2. Use the notes of the blues scale
3. Use swung quaver rhythms
4. Use repetition and simple phrases

G		Bb	C	Db	D	F	G
---	--	-----------	---	-----------	----------	----------	---

17

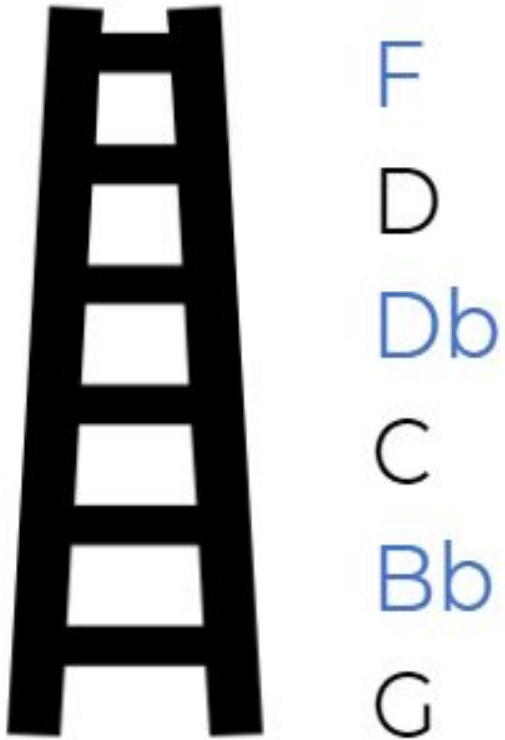
D C Bb C Bb G Bb G F G



Structure your blues melodies

AAB - Duffy and Bessie Smith

A	8 beats long (think about the number of beats as you write your lyrics)	Oh I miss my baby, feels like time to go.
A	This is the same as the first line	Oh I miss my baby, feels like time to go.
B	This is also 8 beats long; the last word rhymes with the last word in A	I wrote a love letter, they really need to know.



Created by Trisula
from Noun Project

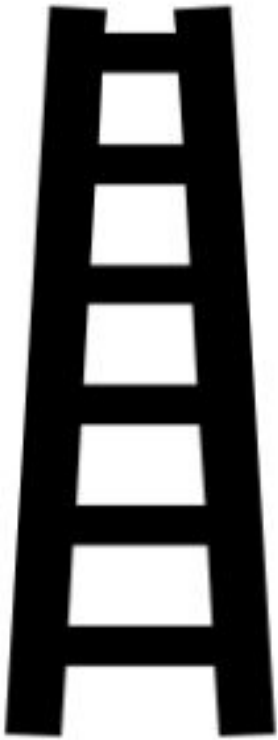
Use the notes in the blues scale and follow the 12 bar structure



Structure your blues melodies

ABAC - “Wade in the Water”

A	8 beats long	
B	8 beats long but different pitches	
A	This is the same as the first A phrase - 8 beats long	
C	8 beats long and the last word rhymes with the last word of the A section	



F
D
Db
C
Bb
G

Created by Trisula
from Noun Project

Use the notes in the blues scale and follow the 12 bar structure



References

- Slide [2] - [ARKSMP] - [ARKMusic] - [bagsgroovehead]

