

Human Reproductive System

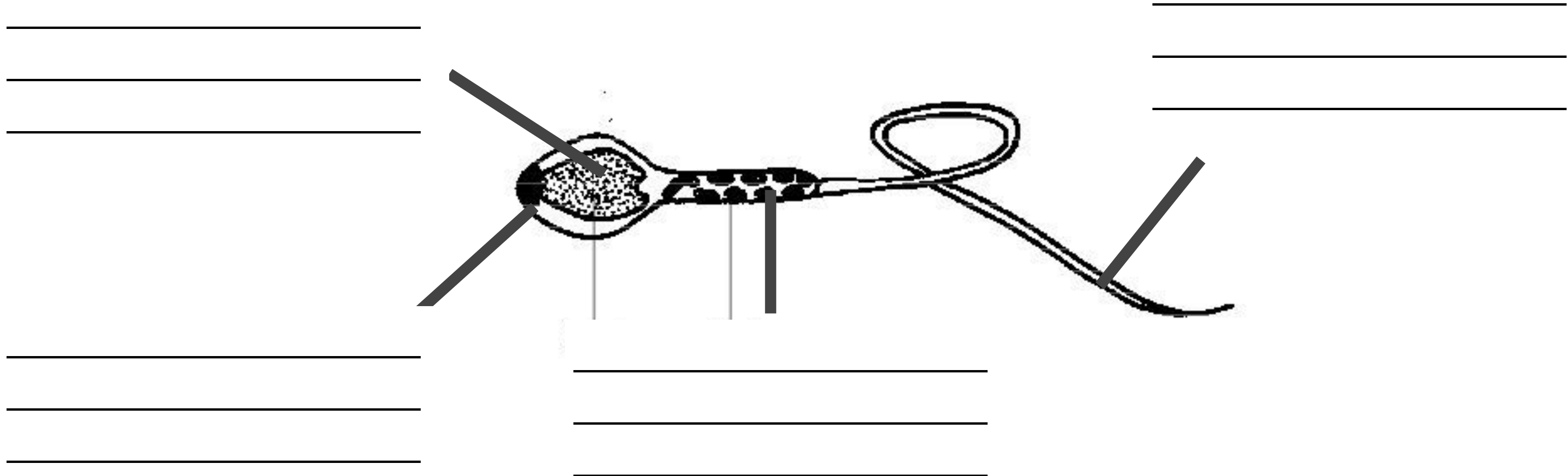
Biology - Key Stage 3

Reproduction - Lesson 1

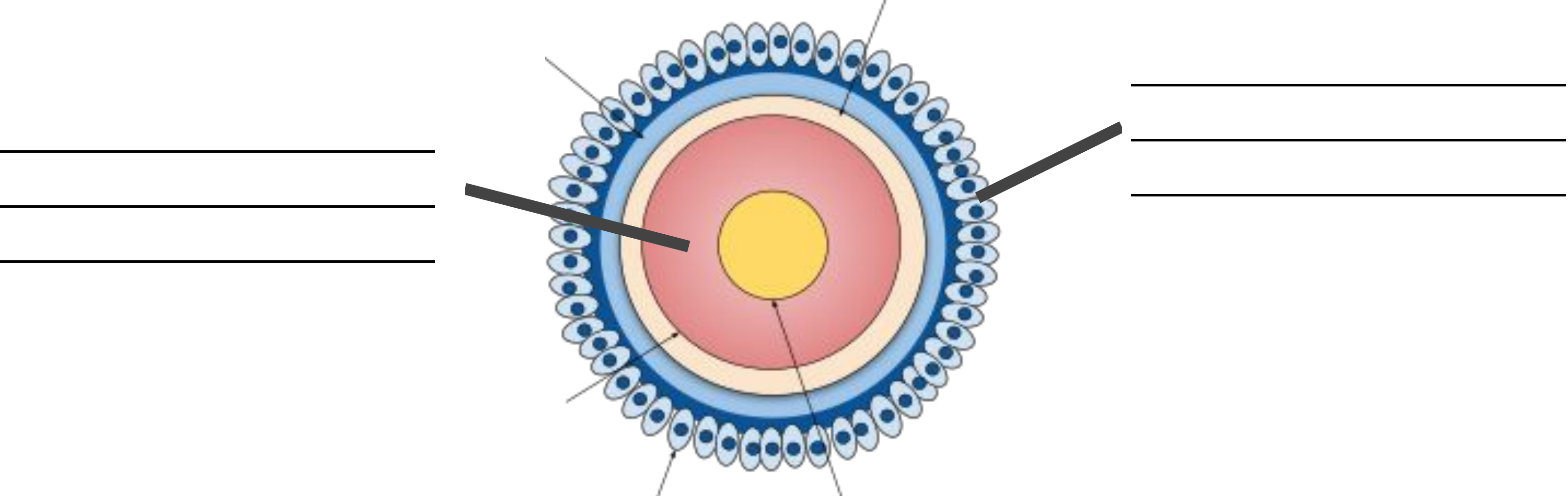
Mr Wyatt



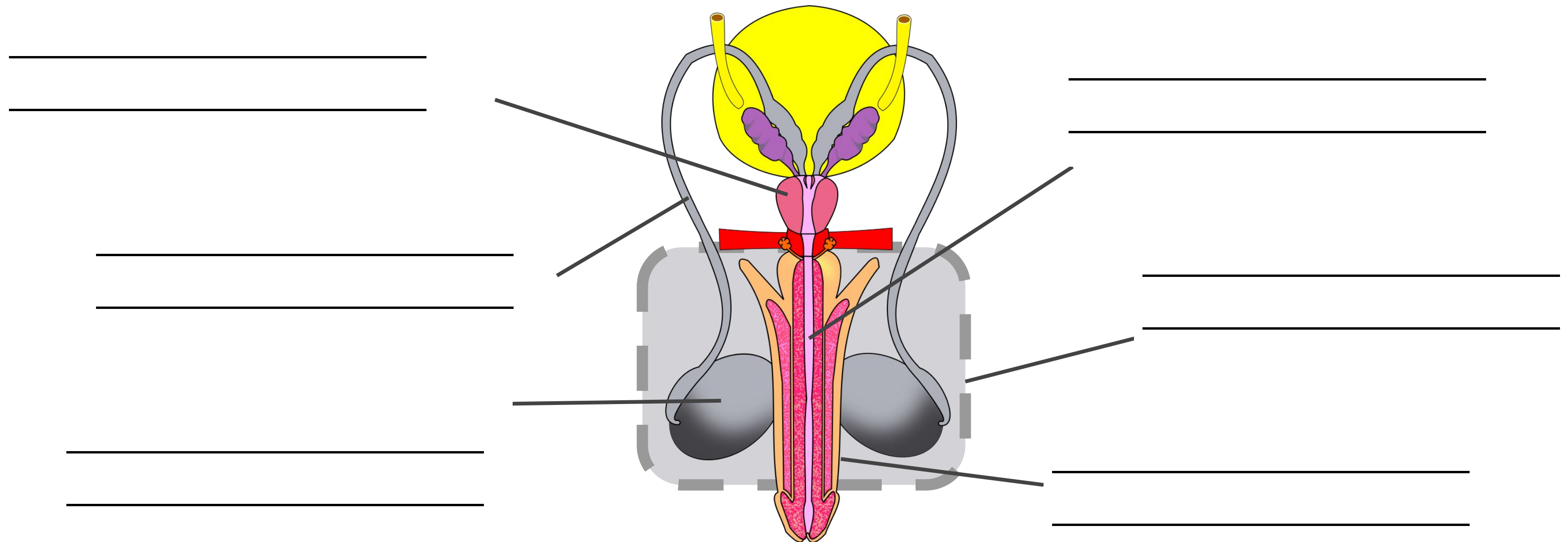
Label the diagram of the sperm. Write a short sentence to explain what each adaptation is for.



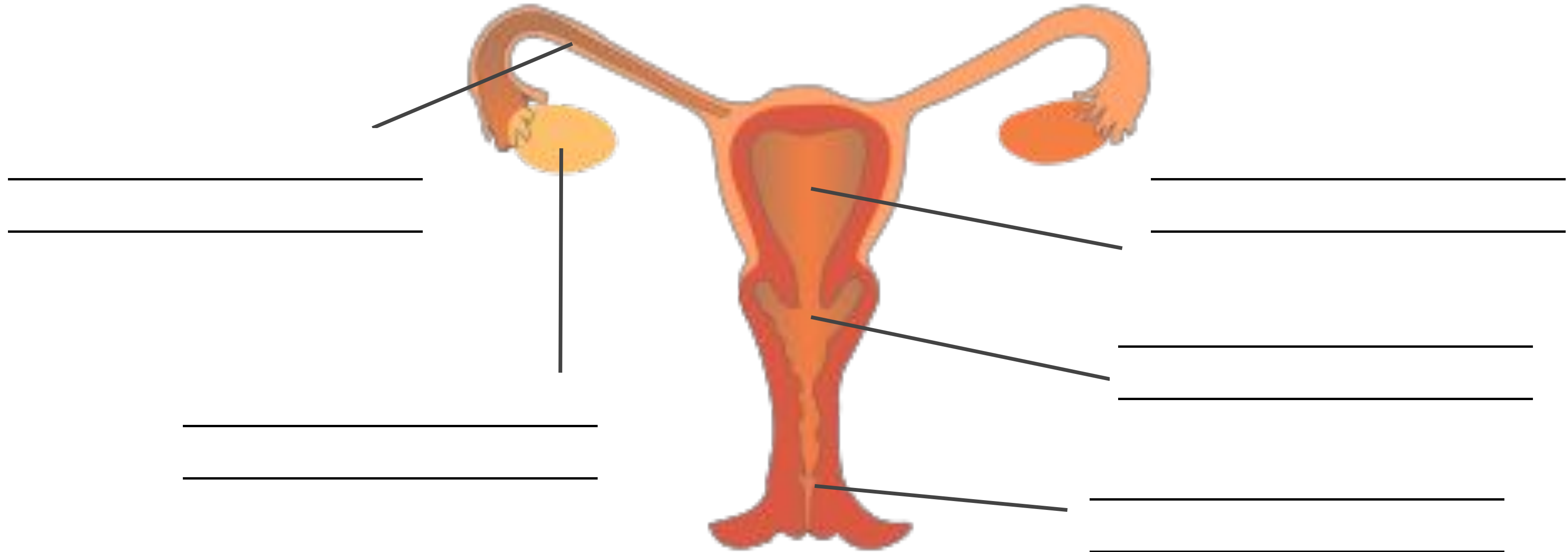
Label the diagram of the egg. Write a short sentence to explain what each adaptation is for.



Label the diagram of the male reproductive system.
Write a short sentence to explain what each part is for.



**Label the diagram of the female reproductive system.
Write a short sentence to explain what each part is for.**



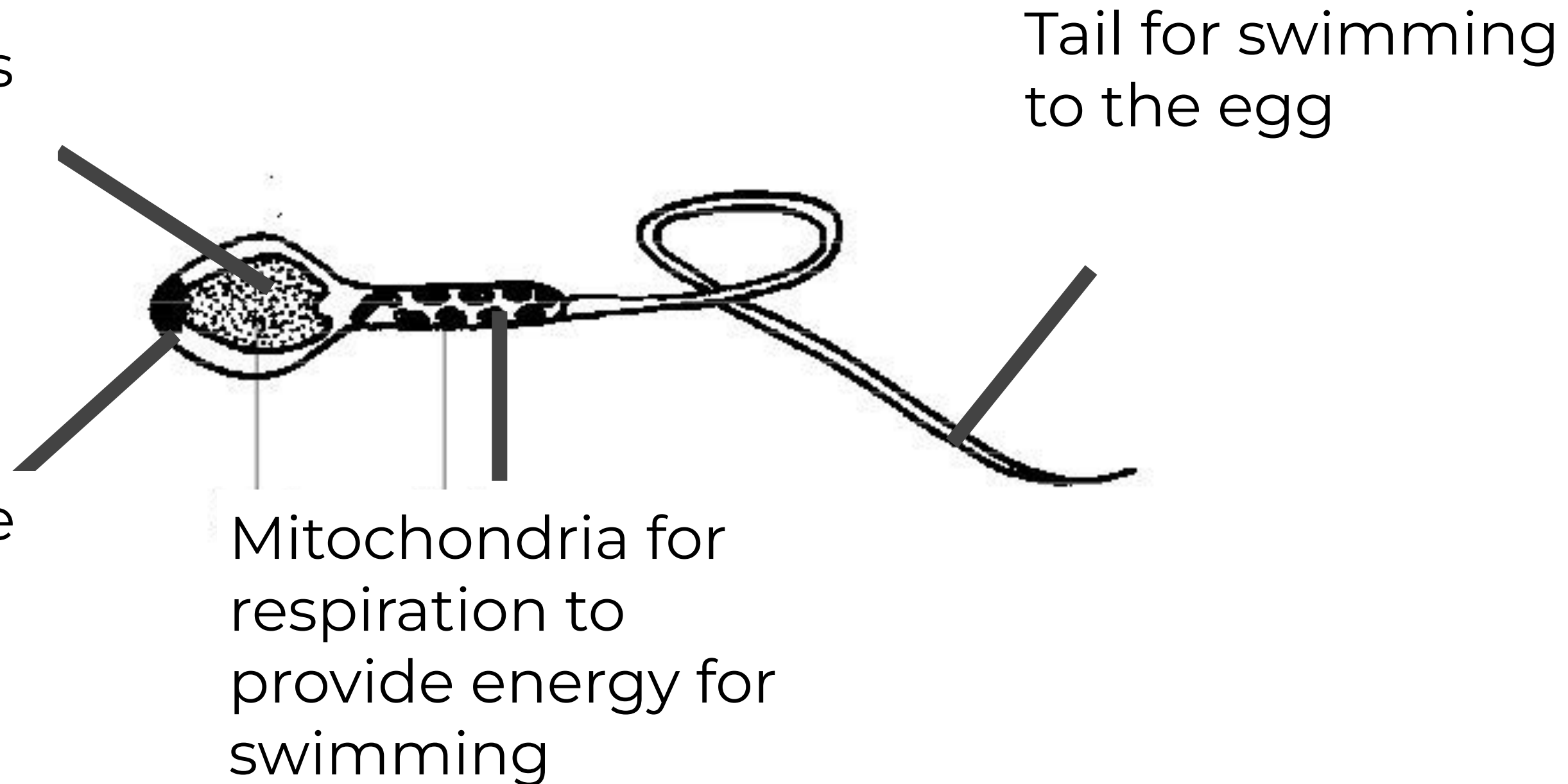
Answers



Label the diagram of the sperm. Write a short sentence to explain what each adaptation is for.

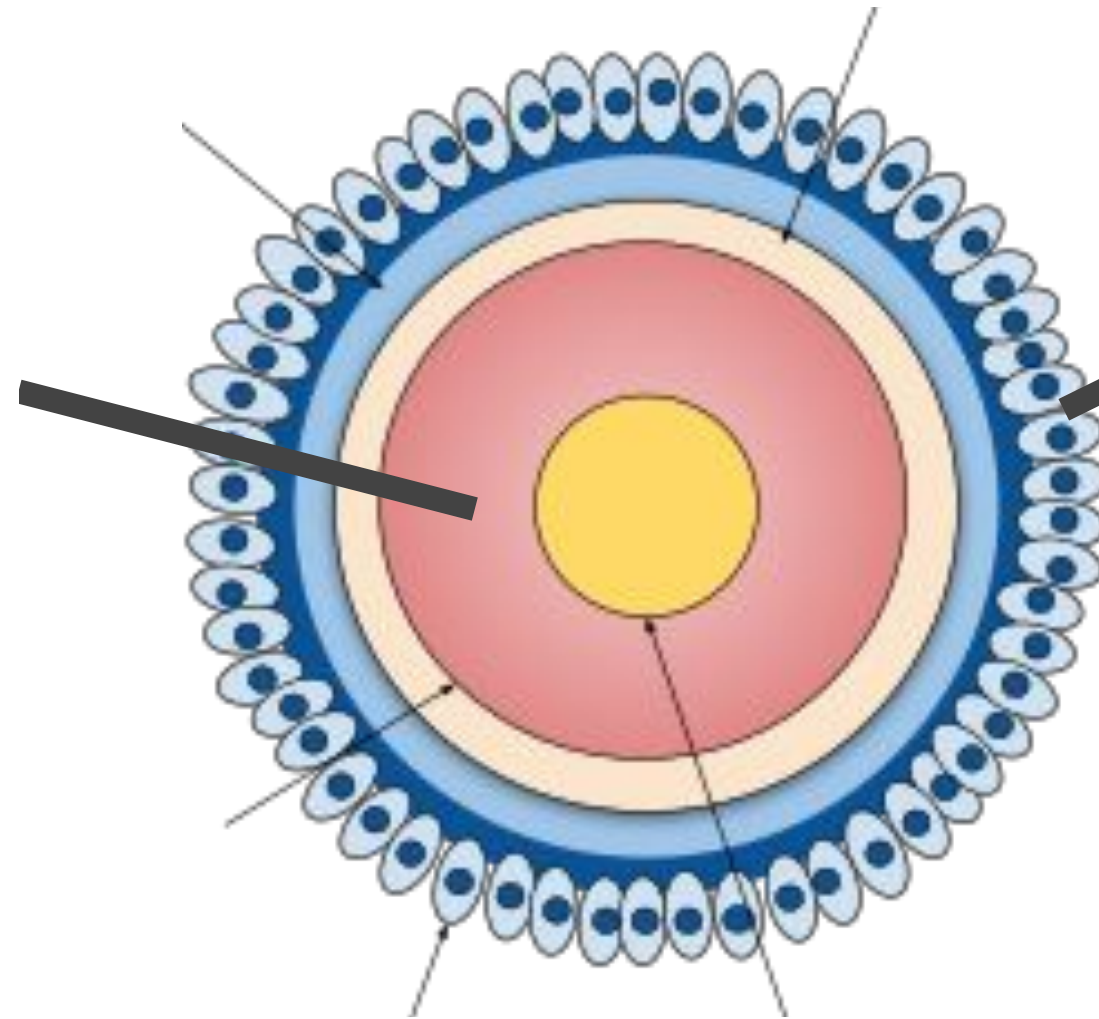
Digestive enzymes to penetrate the outer layer of the egg.

Streamlined shape to help penetrate and get into the egg



Label the diagram of the egg. Write a short sentence to explain what each adaptation is for.

Nutrients to act as
a food source for
the developing
baby



Jelly coat to make
sure only one
sperm can get in



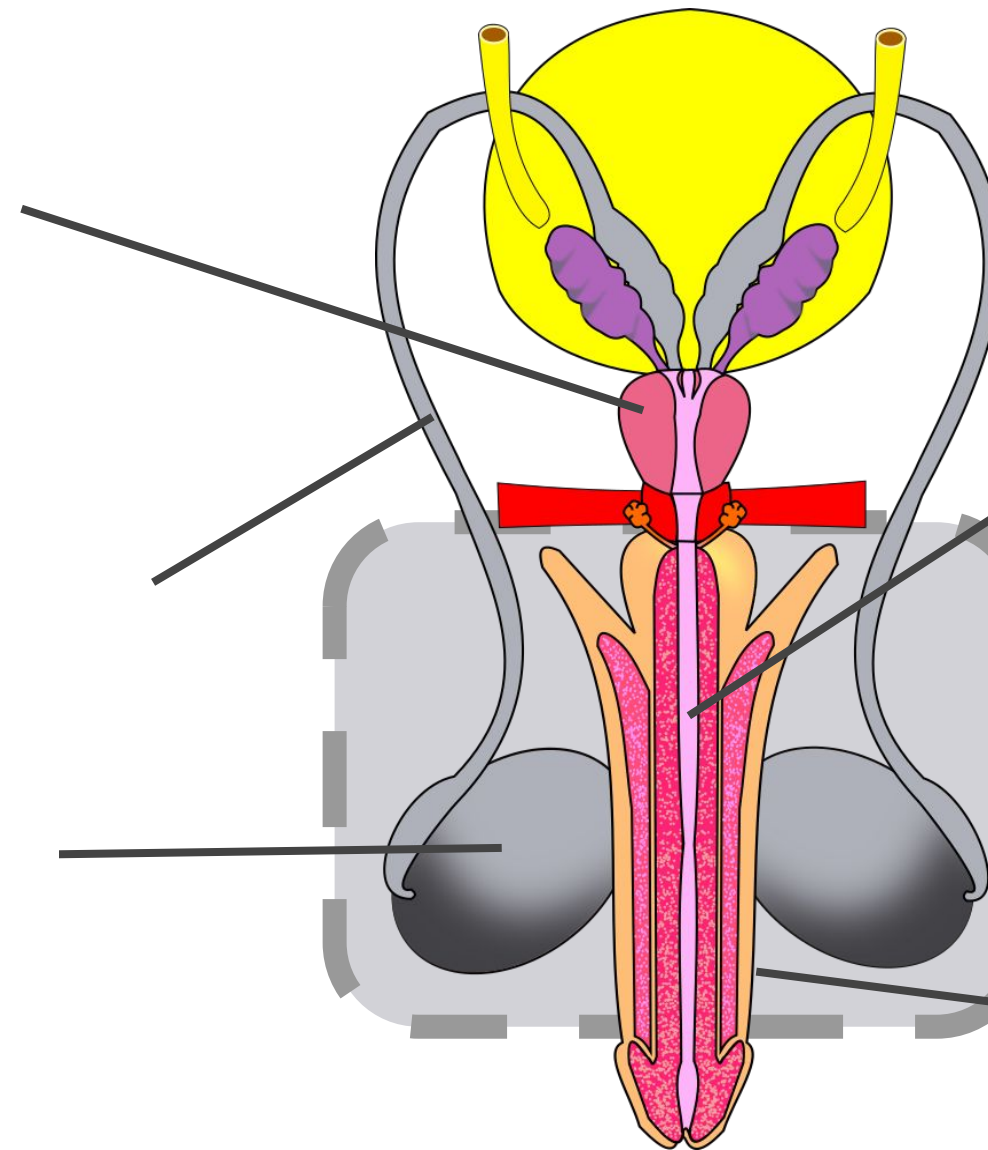
Label the diagram of the male reproductive system.

Write a short sentence to explain what each part is for.

Glands to add fluid
to the sperm

Sperm duct to
carry sperm from
the testes

Testes where
sperm are made



Urethra to carry
sperm and urine

Scrotum to hold
testes outside the
body

Penis where the
sperm exit the
body



Label the diagram of the female reproductive system.
Write a short sentence to explain what each part is for.

